



Federal Office
for Information Security

BSI Technical Guideline TR-03135-3

Machine Authentication of MRTDs for Public Sector Applications

Part 3: High Level Document Check Interface Specification

Version 2.5



Federal Office for Information Security
P.O. Box 20 03 63
53133 Bonn
E-Mail: tr-03135@bsi.bund.de
Internet: <https://www.bsi.bund.de>
© Federal Office for Information Security

Table of Contents

1.	Changelog	1
1.1.	Changelog 2.5 Part 3	1
2.	Introduction	2
2.1.	Motivation	2
3.	Architecture for Inspection Applications	3
3.1.	Client-Server Architecture	3
3.2.	Workflow-Based Document Check	3
3.3.	Transaction Logging	4
3.4.	Cross-document combined check	4
4.	Document overview	6
4.1.	Terminology	6
4.2.	Naming conventions	6
4.3.	Namespaces	7
4.4.	XML Schema and Web Service Definition	7
4.5.	Interoperability	7
5.	Interface overview	8
5.1.	High-Level Document Check	8
5.2.	Transaction management interface	9
5.3.	Error handling	9
6.	High Level Document Check API	10
6.1.	Namespaces	10
6.2.	Data types	10
6.3.	Fault types	14
6.4.	Operations	16
6.5.	Workflow definition schema	26
7.	Workflow feedback schema	62
7.1.	Feedback document	62
7.2.	type.feedback	62
7.3.	type.feedback.dg1	64
7.4.	type.feedback.dg2	66
7.5.	type.feedback.dg2.template	66
7.6.	type.feedback.dg2.image	67
7.7.	type.feedback.dg3	68
7.8.	type.feedback.dg3.template	68
7.9.	type.feedback.dg3.image	68
7.10.	type.feedback.dg3.image.fingerpos	69
7.11.	type.feedback.dg4	70

7.12.	type.feedback.dg4.template	70
7.13.	type.feedback.dg4.image	71
7.14.	type.feedback.dg11	71
7.15.	type.feedback.dg12	73
7.16.	type.feedback.optmrz	74
7.17.	type.feedback.eid.placeofresidence	75
7.18.	type.feedback.eid.placeofresidence.structuredplace	76
7.19.	type.feedback.defects	76
7.20.	type.feedback.oid	77
7.21.	type.feedback.defects.defect	77
7.22.	type.feedbacks.name	78
7.23.	type.feedback.namelist	78
7.24.	type.feedback.checkresult	79
7.25.	type.feedback.xpathresult	79
7.26.	type.feedback.seal.visa	79
7.27.	type.feedback.seal.visa.durationofstay	80
7.28.	type.feedback.seal.emergencytraveldocument	81
7.29.	type.feedback.seal.arrivalattestationdocument	81
7.30.	type.feedback.seal.socialinsurancecard	82
7.31.	type.feedback.seal.residencepermit	82
7.32.	type.feedback.seal.residencepermitsupplementarysheet"	83
7.33.	type.feedback.seal.addressstickergermanidentitycard"	83
7.34.	type.feedback.seal.unknown	84
7.35.	type.feedback.mrz.unfolded	84
7.36.	type.feedback.mrz.unfolded.shortened	86
7.37.	type.feedback.string.date	87
7.38.	type.feedback.extended	88
7.39.	Workflow extensions	88
8.	Transaction management	90
8.1.	Namespace	90
8.2.	Data types	90
8.3.	Fault types	91
8.4.	Operations	93
	List of Abbreviations	105
	Bibliography	106

List of Figures

- 3.1. Client-side document check process 3
- 3.2. Extension of with -compliant logging 4
- 3.3. Extension of accounting for cross-document combined checks. 5

1. Changelog

The following tables present the changes introduced between the latest versions of this Technical Guideline. The changelog lists the changes grouped per part of this Technical Guideline, per element (section, table, figure) and type of change, refer to [KeepAChangelog]:

- *Added* for new features
- *Changed* for changes in existing functionality
- *Deprecated* for soon-to-be removed features
- *Removed* for now removed features
- *Fixed* for any bug fixes
- *Security* in case of vulnerabilities

1.1. Changelog 2.5 Part 3

Element Name	Type of Change	Change Description
Chapter High Level Document Check API	Added	New workflow elements: <ul style="list-style-type: none"> • AggregatedCheck • SealCheck
Chapter Workflow feedback schema	Added	New feedback elements: <ul style="list-style-type: none"> • type.feedback.seal.visa • type.feedback.seal.visa.durationofstay • type.feedback.seal.emergencytraveldocument • type.feedback.seal.arrivalattestationdocument • type.feedback.seal.socialinsurancocard • type.feedback.seal.socialinsurancocard.socialinsurancenummer • type.feedback.seal.residencepermit • type.feedback.seal.residencepermitsupplementarysheet • type.feedback.seal.addressstickergermanidentitycard • type.feedback.seal.unknown • type.feedback.mrz.unfolded • type.feedback.mrz.unfolded.shortened

Table 1.1 Changelog BSI TR-03135, Part 3

2. Introduction

This technical guideline specifies two complimentary web services that provide validation of Machine-Readable Travel Documents (MRTDs) according to [BSI TR-03135-1]. They comprise the document check process as well as the required logging of the results.

2.1. Motivation

The checking of Machine Readable Travel Documents (MRTDs) according to [BSI TR-03135-1] requires a large number of individual steps. Some steps require a certain order of execution or may only be relevant for particular documents. In contrast to a fixed definition of scenario-specific check processes, the processing and visualization of results and/or document data may vary with the purpose of the Inspection Application. The complexity of the document check process causes large efforts for the creation and quality control of Inspection Applications.

The goal of this document is to provide high-level interfaces that reduces the programming effort for Inspection Applications by separating the document check process and standard-compliant logging from the problem-specific processing and visualization of results.

3. Architecture for Inspection Applications

3.1. Client-Server Architecture

To ease the implementation of Inspection Applications for document checks, they are split into two parts. Frontends, or clients, are application-specific. They provide a user interface and process and visualize results depending on their particular purpose. The [BSI TR-03135]-compliant document check process and the corresponding transaction logging are provided by a backend server as web services. This separation reduces the effort to implement Inspection Applications for different purposes considerably.

3.2. Workflow-Based Document Check

To further reduce the effort for client implementation, the document check process is configured based on a textual description in Extensible Markup Language (XML) rather than program code. A particular configuration is referred to as workflow, its description as workflow definition. This definition allows the customization of the application-scenario-specific document check process within the limits of [BSI TR-03135].

It controls which optical, electronic and combined checks are carried out and which data are required for processing. The document data and check results are referred to as feedback. Please refer to ▶Section 6.5 for an exhaustive specification of the workflow definition and ▶Chapter 7 for the specification of the feedback data format.

The workflow definition can be provided by the client or the server. This allows clients to use custom workflows but also allows centralized management on the server. All workflows are managed by the server and are available to all clients. Workflows are executed on the server upon request by the client. Relevant feedback is generated on the server and can be fetched by the client individually.

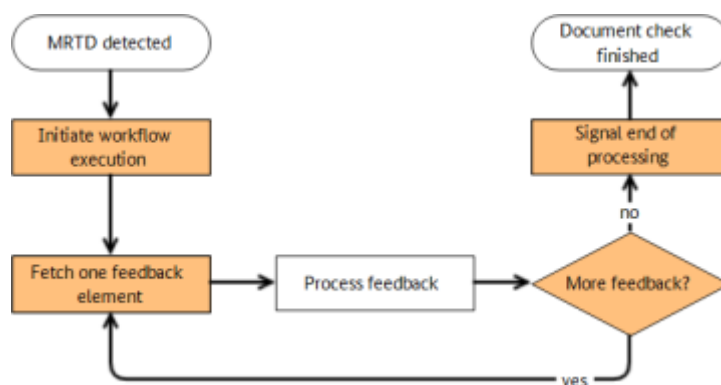


Figure 3.1. Client-side document check process

▶Figure 3.1 visualizes the client side of the document check process. Workflow-related interface operations are highlighted in orange. After a new document is detected, the client requests execution of the relevant workflow. In the following, the client individually fetches the feedback elements that are defined in the workflow from the server and processes them appropriately, e.g. by visualizing them to the user. After all feedback has been processed successfully, the client informs the server that client-side processing has finished. ▶Section 5.1 provides a quick overview of the interface functions. The interface specification can be found in ▶Chapter 6.

3.3. Transaction Logging

[BSI TR-03135-1] requires logging of all relevant check results which is provided by the interface specified in ▶Chapter 8. If multiple documents need to be checked, the corresponding transactions can be merged into a single transaction for consistent logging of related document checks.

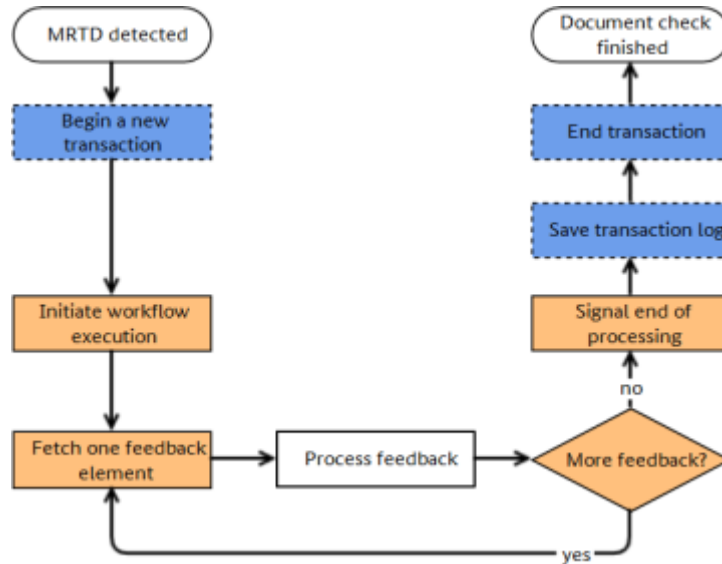


Figure 3.2. Extension of ▶Figure 3.1 with [BSI TR-03135] -compliant logging

▶Figure 3.2 shows the extension of the client side of the document check process from ▶Figure 3.1 with transaction logging operations (highlighted in blue, dashed). The client initiates a new transaction after a MRTD was detected and before initiating workflow execution. After the workflow execution and result processing is finished, the client requests saving of the corresponding transaction log and then ends the transaction. ▶Section 5.2 provides a quick overview of the interface functions.

3.4. Cross-document combined check

Part 1 of this Technical Guideline specifies checks across two different documents (e.g. passport and visa) or two sides of the same document (e.a. front and rear side of ID cards).

Initially, both documents (or document sides) are checked individually. Cross-document combined checks, which are always defined for a specific document (e.g. visa), are skipped.

Its the responsibility of the client to control which documents are considered for cross-document combined checks. After linking the respective documents, the cross-document combined checks are executed.

The Inspection Application MUST merge the corresponding transaction to ensure consistent logging of the checking process.

▶Figure 3.3 shows the extension of the single document checking process in ▶Figure 3.2 which accounts for potential cross-document combined checks. After finishing the initial checking of a document, the client checks if feedback elements for any cross-document combined checks are missing. If so, the client needs to link the currently checked document (e.g. visa) to the relevant reference document (e.g. passport) and re-request the corresponding feedback elements. Afterwards, the corresponding transactions for both documents must be merged.

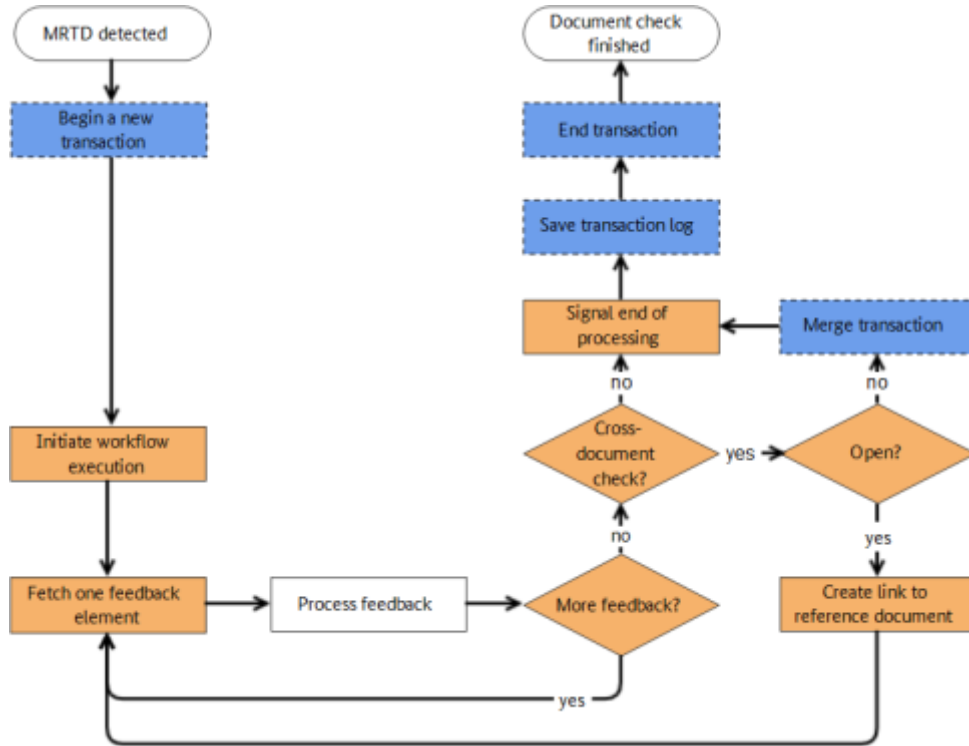


Figure 3.3. Extension of Figure 3.2 accounting for cross-document combined checks.

4. Document overview

4.1. Terminology

The key words "MUST", "MUST NOT", "REQUIRED", "SHALL", "SHALL NOT", "SHOULD", "SHOULD NOT", "RECOMMENDED", "MAY", and "OPTIONAL" in this document are to be interpreted as described in [RFC2119].

4.2. Naming conventions

4.2.1. Multiplicity

Generally, XML elements and attributes listed in this document are required, i.e. the respective parent element MUST contain exactly one such element. Elements and attributes that deviate from this baseline are denoted in this document by a symbol which is appended to the element/attribute name. The symbols are listed in ▶Table 4.1 .

Appended symbol	Meaning
?	Zero or one
*	Zero or more
+	One or more

Table 4.1 Multiplicity symbols

4.2.2. SOAP Interfaces

All operations of this interface follow the request/response model, i.e., communication is initiated by the client by sending a Simple Object Access Protocol (SOAP) message to the server (request). For each request, the server replies with a SOAP message containing the result of the requested operation (response) or, in case of error, a fault.

The body of each SOAP message consists of a single part which is named according to the corresponding operation. For requests, the part name is identical to the name of the operation. For responses, the part name is identical to the name of the operation plus the suffix "Response" (see ▶Table 4.2).

Message type	Part name
Request	<operation_name>
Response	<operation_name>Response

Table 4.2 Naming convention for SOAP messages

Example: Naming convention

- Operation: getAllWorkflows
- Request: getAllWorkflows
- Response: getAllWorkflowsResponse

Both request and response elements exclusively contain zero or more child elements according to the detailed description in this guideline. They do not carry any attributes.

4.3. Namespaces

The namespaces used in the schemata are given in ▶Table 4.3.

Prefix	Description	Description
hl dc	High Level Document Check	http://trdoccheck.bsi.bund.de/hl-dc/wsd1/2
wf	High Level Document Check (HLDC) Workflow and Feedback	http://trdoccheck.bsi.bund.de/hl-dc/workflow/2
t1	Transaction management	http://trdoccheck.bsi.bund.de/t1/wsd1/2
xs	XML Schema	http://www.w3.org/2001/XMLSchema

Table 4.3 Namespaces

4.4. XML Schema and Web Service Definition

The XML Schema Definition (XSD) (.xsd) and Web Services Description Language (WSDL) (.wsdl) files given in ▶Table 4.4 are provided with this Technical Guideline.

Message type	Part name
hl dc_v2 . wsdl	HLDC web service definition (▶Chapter 6)
hl dc_v2 . xsd	XSD for HLDC web service
wf_v2 . xsd	XSD for workflow definitions (▶Section 6.5)
fb_v2 . xsd	XSD for workflow feedback (▶Chapter 7)
t1_v2 . wsdl	Transaction management web service definition (▶Chapter 8)
t1_v2 . xsd	XSD for transaction management web service

Table 4.4 Naming convention for SOAP messages

4.5. Interoperability

To ensure trouble-free interoperability between different SOAP implementations, both client and server implementations SHOULD fulfill the WS-I Basic Profile 1.1.

5. Interface overview

5.1. High-Level Document Check

5.1.1. Objective

HLDC interface provides execution of [BSI TR-03135]-compliant document checks controlled by XML-based workflow definitions.

5.1.2. Document detection

The client MAY choose to be notified of a newly detected document by explicit waiting (blocking).

- Calling `waitForNewDocument` blocks client execution until a new document is detected (limited by a timeout).

5.1.3. Workflow management

- The client MAY publish custom workflow definitions on the server by calling `addWorkflow`. Identically named workflow definitions are replaced.
- The client MAY remove workflow definitions from the server by calling `removeWorkflow`.
- The function `getAllWorkflows` provides a list of all workflow definitions that are available on the server.

5.1.4. Workflow execution

- The function `beginWorkflow` executes a document check workflow. If no transaction ID is provided, the server MUST initiate a new transaction internally to ensure [BSI TR-03135]-compliant logging. `beginWorkflow` provides a unique workflow ID that MUST be used in subsequent calls. In general, the ID MUST remain valid until the client calls `endWorkflow`. To protect against broken clients, the server MAY limit the ID validity with a timeout.
- Workflow execution MAY be cancelled by calling `cancelWorkflow`.
- The client MUST inform the server that client-side workflow processing has finished by calling `endWorkflow`.

5.1.5. Workflow feedback

Document and check result data are provided by the server individually and are referred to as workflow feedback.

- The function `getWorkflowFeedback` provides the next available feedback element.
- The client MAY request particular document and result data by calling `getWorkflowFeedbackById`.

5.1.6. Cross-document checks

If a workflow contains definitions for cross-document combined checks, the client SHOULD call `linkWorkflow` in order to assign the relevant reference document. The call MUST appear after feedback processing for the current document has finished.

5.2. Transaction management interface

5.2.1. Objective

The transaction management interface provides functions to link document check operations to a [BSI TR-03135]-compliant transaction and to allow logging of relevant data.

5.2.2. Transaction management

- Transactions are initiated by `beginTransaction`. In contrast to calling the HLDC function `beginWorkflow` without a transaction ID, this function provides an ID that is REQUIRED for all the functions of this interface and MAY be used when calling `beginWorkflow` in order to link the workflow execution to this particular transaction.
- Multiple transactions MAY be merged into a single one with `mergeTransaction`.
- Transactions are terminated by `endTransaction` which invalidates the transaction ID.

5.2.3. Logging

- The function `saveTransaction` stores the currently available logged transaction data persistently on the server. The client MAY limit the amount of data that is stored.
- The client MAY request the currently available transaction data for client-side use by calling `getTransactionXML`.
- Client-specific data MAY be logged by calling `addLogData`.
- The function `getAllLoggingProviders` is OPTIONAL and MAY return a server-specific list of logging targets that MAY be used when calling `saveTransaction`.
- The function `saveTransactionXML` allows to store client-generated XML via available logging providers.
- The client MAY publish custom logging profiles (Extensible Stylesheet Language Transformation (XSLT)) on the server by calling `addLoggingProfile`. Identically named logging profiles are replaced.
- The client MAY remove logging profiles from the server by calling `removeLoggingProfile`.

5.2.4. Write-protection

In order to prevent inconsistent log data, a transaction is protected against further modification after the first read access, i.e., after calls to `saveTransaction` and `getTransactionXML`. All future write access, i.e., calls that would modify the transaction, MUST fail then with an appropriate error.

The server MAY fail read access calls with appropriate error if the transaction is currently modified (e.g., by the document check process).

5.3. Error handling

If errors occur during processing of a web service request, a SOAP fault is generated according to the SOAP 1.1 specification. SOAP faults are comparable to exceptions in programming languages such as C++, C# or Java insofar as they allow reporting of errors without the need to account for error codes in function signatures.

SOAP faults are returned in place of the SOAP response. Depending on the type of an error, the fault message may contain additional information about the error. The faults that are specific to the web services in this document are specified in the respective chapters and listed with every function that may generate them. Faults originating from other causes such as network connection problems or validation errors are beyond the scope of this document as they depend on the specific SOAP implementation.

6. High Level Document Check API

The HLDC Application Programming Interface (API) contains functions to perform electronic and optical document checks in conformity to part 1 of this Technical Guideline. The check processes are driven by XML workflows and provide a very high level interface to the application. The check results contain multiple sub-results which are combined to overall results according to [BSI TR-03135-1]. All checks can be logged in XML format compliant to [BSI TR-03135-1] using the transaction management API in ▶Chapter 8.

The definitions of the HLDC API are provided in `h1dc_v2.wsdl`. The schemata for the workflow definition and XML-formatted feedback are provided in `wf_v2.xsd` and `fb_v2.xsd` respectively.

6.1. Namespaces

The elements of the server- and client-side APIs are member of the namespace `http://trdoccheck.bsi.bund.de/hlhc/wsd1/2`, which is aliased by `h1dc`. The workflow definition schema and the workflow feedback schema use the namespace `http://trdoccheck.bsi.bund.de/hlhc/workflow/2` aliased by `wf`.

6.2. Data types

In addition to simple XSD types, the SOAP interface uses custom data types, which are described in the following.

6.2.1. FeedbackStatus

Represents the status of a feedback element. Derived from `xs:string`.

6.2.1.1. Values

The values of the FeedbackStatus values are given in ▶Table 6.1.

Value	Description
<code>valid</code>	The feedback element contains valid data which is available in <code>stringFeedback</code> or <code>binaryFeedback</code> .
<code>err-invalid-conversion</code>	An error occurred during feedback preparation. Data could not be converted into the specified target format.
<code>err-not-available</code>	Requested data is not available or could not be read.
<code>err-reference-document-required</code>	Requested data require access to a reference document for cross-document checks (see <code>linkWorkflow</code>).

Table 6.1 FeedbackStatus - values

6.2.1.2. WSDL Definition

```
<simpleType name="FeedbackStatus">
  <restriction base="xs:string"/>
    <enumeration value="valid"/>
    <enumeration value="err-invalid-conversion"/>
    <enumeration value="err-not-available"/>
  </restriction>
</simpleType>
```

6.2.2. UUID

Serves to uniquely reference various elements at runtime (e.g. currently executing workflows). Inherits `xs:string`.

6.2.2.1. Format restrictions

The content **MUST** be empty or represent a universally unique identifier of 32 lower-case hexadecimal letters that are separated into 5 groups of length 8, 4, 4, 4 and 12 letters using hyphens (e.g. 01234567-89ab-cdef-0123-456789abcdef).

6.2.2.2. WSDL Definition

```
<simpleType name="UUID">
  <restriction base="xs:string">
    <pattern value="([A-Fa-f0-9]{8}-[A-Fa-f0-9]{4}-[A-Fa-f0-9]{4}-[A-Fa-f0-9]{4}-[A-Fa-f0-9]{12})?"/>
  </restriction>
</simpleType>
```

6.2.3. Workflow

Contains general workflow information.

6.2.3.1. Elements

The Workflow elements are given in ▶Table 6.2.

Element name	Description
name	<code>xs:string</code> The name of the workflow.
vendor	<code>xs:string</code> The vendor that defined the workflow.
version	<code>xs:string</code> The version of the workflow.
description	<code>xs:string</code> The description of the workflow.

Table 6.2 Workflow - elements

6.2.3.2. WSDL Definition

```
<complexType name="Workflow">
  <sequence>
    <element name="name" type="xs:string" />
    <element name="vendor" type="xs:string"/>
    <element name="version" type="xs:string"/>
    <element name="description" type="xs:string"/>
  </sequence>
</complexType>
```

6.2.4. WorkflowFeedback

Represents a feedback element from a HLDC workflow.

6.2.4.1. Attributes

None.

6.2.4.2. Elements

The WorkflowFeedback elements are given in ▶Table 6.3.

Element name	Description
feedbackID	xs:string Reference to a feedback element. MUST be empty if status is either finished or cancelled. MUST NOT be empty otherwise.
stringFeedback?	xs:string The feedback data as string (if possible). MUST be empty if status is different from valid.
binaryFeedback?	xs:base64Binary The feedback data as binary (if possible). MUST be empty if status is different from valid.
status	hldc:FeedbackStatus The status code of the feedback element.

Table 6.3 WorkflowFeedback - elements

6.2.4.3. WSDL Definition

```
<complexType name="WorkflowFeedback">
  <sequence>
    <element name="feedbackID" type="xs:string" />
    <element name="stringFeedback" type="xs:string"
      minOccurs="0" />
    <element name="binaryFeedback" type="xs:base64Binary"
      minOccurs="0" maxOccurs="1" />
    <element name="status" type="hldc:FeedbackStatus" />
  </sequence>
</complexType>
```

6.2.5. WorkflowParameter

Key-value pair to configure conditions of type `type.workflow.conditions.parameter` in a HLDC workflow definition.

6.2.5.1. Attributes

None.

6.2.5.2. Elements

The WorkflowParameter elements are given in ▶Table 6.4.

Element name	Description
id	xs:string The key.
value	xs:boolean Specifies whether the corresponding condition MUST be considered fulfilled.

Table 6.4 WorkflowParameter - elements

6.2.5.3. WSDL Definition

```
<complexType name="WorkflowParameter">
  <sequence>
    <element name="id" type="xs:string" />
    <element name="value" type="xs:boolean" />
  </sequence>
</complexType>
```

6.2.6. WorkflowParameters

List of key-value pairs.

6.2.6.1. Elements

The WorkflowParameters elements are given in ▶Table 6.5.

Element name	Description
parameter*	hldc:Parameter A key-value pair..

Table 6.5 WorkflowParameters - elements

6.2.6.2. WSDL Definition

```
<complexType name="WorkflowParameters">
  <sequence>
    <element name="parameter" type="hldc:WorkflowParameter"
      minOccurs="0" maxOccurs="unbounded" />
  </sequence>
</complexType>
```

6.2.7. WorkflowStatus

Represents the execution status of a workflow. Derived from xs:string.

6.2.7.1. Values

The WorkflowParameters values are given in ▶Table 6.6.

Value	Description
ok	Workflow execution is still in progress.
finished	The workflow execution has finished. This is the last feedback element delivered by getWorkflowFeedback.
cancelled	The workflow has been cancelled by the user. This is the last feedback element delivered by getWorkflowFeedback.

Table 6.6 WorkflowStatus - values

6.2.7.2. WSDL Definition

```
<simpleType name="WorkflowStatus">
  <restriction base="xs:string">
    <enumeration value="ok" />
    <enumeration value="finished" />
    <enumeration value="cancelled" />
  </restriction>
</simpleType>
```

6.3. Fault types

This section specifies the SOAP faults that are specific to this SOAP API. No fault has any attributes.

6.3.1. InvalidClientId

Returned if a client ID does not exist on the server. The ID is either invalid or has expired.

6.3.1.1. Elements

None

6.3.1.2. WSDL Definition

```
<complexType name="InvalidClientId">
  <sequence>
  </sequence>
</complexType>
```

6.3.2. InvalidConditionId

Returned if a condition ID is not defined in the workflow definition.

6.3.2.1. Elements

The InvalidConditionId elements are given in ▶Table 6.7.

Element name	Description
id	xs:string The rejected ID.

Table 6.7 InvalidConditionId - elements

6.3.2.2. WSDL Definition

```
<complexType name="InvalidConditionId">
  <sequence>
    <element name="id" type="xs:string" />
  </sequence>
</complexType>
```

6.3.3. InvalidFeedbackId

Returned if the feedback ID in the request is not defined in the workflow definition.

6.3.3.1. Elements

None.

6.3.3.2. WSDL Definition

```
<complexType name="InvalidFeedbackId">
  <sequence>
  </sequence>
</complexType>
```

6.3.4. InvalidWorkflowId

Returned if a workflow ID does not exist on the server. The ID is either invalid or has expired due to a call to endWorkflow or limited resources on the server.

6.3.4.1. Elements

The InvalidWorkflowId elements are given in ▶Table 6.7.

Element name	Description
id?	h1dc:UUID The rejected ID. Only present in case of ambiguity.

Table 6.8 InvalidWorkflowId - elements

6.3.4.2. WSDL Definition

```
<complexType name="InvalidWorkflowId">
  <sequence>
    <element name="id" type="h1dc:UUID" minOccurs="0" maxOccurs="1" />
  </sequence>
</complexType>
```

6.3.5. WorkflowLimitExceeded

Returned in case of too many executing workflows. The client either needs to cancel a currently executing workflow or wait until it finishes.

6.3.5.1. Elements

None.

6.3.5.2. WSDL Definition

```
<complexType name="WorkflowLimitExceeded">
  <sequence>
  </sequence>
</complexType>
```

6.3.6. WorkflowNotFound

Returned if the requested workflow does not exist on the server.

6.3.6.1. Elements

None.

6.3.6.2. WSDL Definition

```
<complexType name="WorkflowNotFound">
  <sequence>
  </sequence>
</complexType>
```

6.3.7. WorkflowParserError

Returned if the provided workflow definition could not be parsed by the server.

6.3.7.1. Elements

None.

6.3.7.2. WSDL Definition

```
<complexType name="WorkflowParserError">
  <sequence>
```

```

</sequence>
</complexType>

```

6.4. Operations

6.4.1. addWorkflow

Transfers a new workflow definition to the server. Input **MUST** be validated against the schema `wf_v2.xsd` (▶Section 6.5) and **MUST** be checked for consistency. The workflow **MUST NOT** contain invalid ID references and **MUST NOT** contain cyclic dependencies. If an identically named workflow exists on the server, it **MUST** be replaced with the newly submitted definitions.

6.4.1.1. Request elements

The addWorkflow request elements are given in ▶Table 6.9.

Element name	Description
workflowDefinition	xs:base64Binary The base64-encoded XML data of the workflow definition. The XML structure is defined in ▶Section 6.5.

Table 6.9 addWorkflow - request elements

6.4.1.2. Response elements

The addWorkflow response elements are given in ▶Table 6.10.

Element name	Description
workflowName	xs:string The name of the workflow which is parsed from the workflow definition.

Table 6.10 addWorkflow - response elements

6.4.1.3. Faults

The addWorkflow faults are given in ▶Table 6.11.

Fault	Cause
hldc:WorkflowParserError	xs:string An error occurred while parsing or validating the submitted workflow.

Table 6.11 addWorkflow - faults

6.4.1.4. WSDL Definition

```

<!-- operation request element -->
<element name="addWorkflow">
  <complexType>
    <sequence>
      <element name="workflowDefinition" type="xs:base64Binary" />
    </sequence>
  </complexType>
</element>

<!-- operation response element -->
<element name="addWorkflowResponse">
  <complexType>
    <sequence>
      <element name="workflowName" type="xs:string" />
    </sequence>
  </complexType>
</element>

```

```

</sequence>
</complexType>
</element>

```

6.4.2. beginWorkflow

Initiates workflow execution on the server to check the current document and/or read out the requested data. Check results and data **MUST** be queried individually by calling `getWorkflowFeedback` or `getWorkflowFeedbackById`.

6.4.2.1. Request elements

The `beginWorkflow` request elements are given in ▶ Table 6.12.

Element name	Description
<code>workflowName</code>	<p><code>xs:string</code></p> <p>The name of the workflow to execute. MUST be a valid workflow name as returned by <code>addWorkflow</code> or <code>getAllWorkflows</code>.</p>
<code>transactionID?</code>	<p><code>t1:UUID</code></p> <p>Transaction ID returned by <code>t1:beginTransaction</code> (see ▶ Section 8.4.3) to link the workflow to the specified [BSI TR-03135] transaction. If omitted or empty, the server MUST generate a new ID for internal use.</p>
<code>docIdentifier?</code>	<p><code>xs:string</code></p> <p>Machine Readable Zone (MRZ) or Card Access Number (CAN) to be used to access the document instead of the automatically retrieved (if available) MRZ/CAN.</p>
<code>parameters?</code>	<p><code>hldc:WorkflowParameters</code></p> <p>List of key-value pairs which override the default values of the <code>hldc:ParameterCondition</code> entries in the workflow definition. The IDs MUST match the workflow definition.</p>

Table 6.12 `beginWorkflow` - request elements

6.4.2.2. Response elements

The `beginWorkflow` response elements are given in ▶ Table 6.13.

Element name	Description
<code>workflowID</code>	<p><code>hldc:UUID</code></p> <p>Unique ID of the workflow execution which MUST be used as a reference in corresponding function calls.</p>

Table 6.13 `beginWorkflow` - response elements

6.4.2.3. Faults

The `beginWorkflow` faults are given in ▶ Table 6.14.

Fault	Cause
<code>hldc:InvalidConditionId</code>	<code>parameters</code> contains at least on condition that does not match the workflow definition.
<code>hldc:WorkflowLimitExceeded</code>	Too many workflows are currently executing on the server.
<code>hldc:WorkflowNotFound</code>	The workflow <code>workflowName</code> does not exist on the server.

Fault	Cause
t1:InvalidTransactionId	Value of transactionID is invalid or has expired.

Table 6.14 beginWorkflow - faults

6.4.2.4. WSDL Definition

```

<!-- operation request element -->
<element name="beginWorkflow">
  <complexType>
    <sequence>
      <element name="workflowName" type="xs:string" />
      <element name="transactionID" type="t1:UUID" minOccurs="0" />
      <element name="docIdentifier" type="xs:string" minOccurs="0" />
      <element name="parameters" type="h1dc:WorkflowParameters" minOccurs="0" />
    </sequence>
  </complexType>
</element>

<!-- operation response element -->
<element name="beginWorkflowResponse">
  <complexType>
    <sequence>
      <element name="workflowID" type="h1dc:UUID" />
    </sequence>
  </complexType>
</element>

```

6.4.3. cancelWorkflow

Cancels workflow execution. The workflow is cancelled successfully when the status cancelled is returned in the feedback loop.

6.4.3.1. Request elements

The cancelWorkflow request elements are given in ▶Table 6.15.

Element name	Description
workflowID	h1dc:UUID The ID of the workflow to cancel that was returned by beginWorkflow.

Table 6.15 cancelWorkflow - request elements

6.4.3.2. Response elements

None.

6.4.3.3. Faults

The cancelWorkflow faults are given in ▶Table 6.16.

Fault	Cause
h1dc:InvalidWorkflowId	Value of workflowID is invalid or has expired.

Table 6.16 cancelWorkflow - faults

6.4.3.4. WSDL Definition

```

<!-- operation request element -->
<element name="cancelWorkflow">
  <complexType>

```

```

<sequence>
  <element name="workflowID" type="h1dc:UUID" />
</sequence>
</complexType>
</element>

<!-- operation response element -->
<element name="cancelWorkflowResponse">
  <complexType>
    <sequence>
    </sequence>
  </complexType>
</element>

```

6.4.4. endWorkflow

Informs the server that client-side workflow processing has finished. Invalidates the workflow ID. MUST be called by the client for each executed workflow. To protect against broken clients, the server MAY invalidate workflow IDs based on a timeout. SHOULD NOT be called concurrently to other functions that operate on the same workflow ID except `cancelWorkflow`.

6.4.4.1. Request elements

The endWorkflow request elements are given in ▶Table 6.17.

Element name	Description
workflowID	h1dc:UUID Reference to the workflow to end. If the workflow is still executing on the server, the workflow is cancelled by the server.

Table 6.17 endWorkflow - request elements

6.4.4.2. Response elements

The endWorkflow response elements are given in ▶Table 6.18.

Element name	Description
workflowStatus	h1dc:WorkflowStatus Final execution status of the workflow. MUST be either finished or cancelled.

Table 6.18 endWorkflow - response elements

6.4.4.3. Faults

The endWorkflow faults are given in ▶Table 6.19.

Fault	Cause
h1dc:InvalidWorkflowId	Value of workflowID is invalid or has expired.

Table 6.19 endWorkflow - faults

6.4.4.4. WSDL Definition

```

<!-- operation request element #
<element name="endWorkflow">
  <complexType>
    <sequence>
      <element name="workflowID" type="h1dc:UUID" />
    </sequence>

```



```

</complexType>
</element>
<!-- operation response element #
<element name="endWorkflowResponse">
  <complexType>
    <sequence>
      <element name="workflowStatus" type="hldc:WorkflowStatus" />
    </sequence>
  </complexType>
</element>

```

6.4.5. getAllWorkflows

Returns a list of all available workflows.

6.4.5.1. Request elements

None.

6.4.5.2. Response elements

The getAllWorkflows response elements are given in ▶ Table 6.20.

Element name	Description
workflow*	hldc:Workflow The list of all available workflows. getAllWorkflows returns one workflow element per available workflow.

Table 6.20 getAllWorkflows - response elements

6.4.5.3. Faults

None.

6.4.5.4. WSDL Definition

```

<!-- operation request element -->
<element name="getAllWorkflows">
  <complexType>
    <sequence>
    </sequence>
  </complexType>
</element>

<!-- operation response element -->
<element name="getAllWorkflowsResponse">
  <complexType>
    <sequence>
      <element name="workflow" type="hldc:Workflow"
        minOccurs="0" maxOccurs="unbounded" />
    </sequence>
  </complexType>
</element>

```

6.4.6. getWorkflowFeedback

Returns the next available feedback element during workflow execution. Generally called in a loop until finished or cancelled is returned as feedback status. The order in which individual feedback elements are returned may be different from the order in the workflow definition. This function MAY skip feedback elements that were previously explicitly requested by getWorkflowFeedbackById.

6.4.6.1. Request elements

The `getWorkflowFeedback` request elements are given in ▶Table 6.21

Element name	Description
<code>workflowID</code>	<code>h1dc:UUID</code> Reference to the workflow for which the next feedback element is requested.
<code>timeout-ms</code>	<code>xs:int</code> Timeout in milliseconds for getting the next feedback element. If no new feedback element becomes available during this time, an error is returned. The server MAY cap the value. Negative values are interpreted as “infinity” which is subject to a server-imposed limit.

Table 6.21 `getWorkflowFeedback` - request elements

6.4.6.2. Response elements

The `getWorkflowFeedback` response elements are given in ▶Table 6.22.

Element name	Description
<code>workflowStatus</code>	<code>h1dc:WorkflowStatus</code> Current execution status of the workflow.
<code>timeout-expired</code>	<code>xs:boolean</code> MUST be <code>true</code> if no new feedback was available before the timeout expired. MUST be <code>false</code> if new feedback was available in time.
<code>feedback?</code>	<code>h1dc:WorkflowFeedback</code> The next available feedback element. Omitted in case of timeout.

Table 6.22 `getWorkflowFeedback` - response elements

6.4.6.3. Faults

The `getWorkflowFeedback` response elements are given in ▶Table 6.23.

Fault type	Cause
<code>h1dc:InvalidWorkflowId</code>	Value of <code>workflowID</code> is invalid or has expired.

Table 6.23 `getWorkflowFeedback` - faults.

6.4.6.4. WSDL Definition

```

<!-- operation request element -->
<element name="getWorkflowFeedback">
  <complexType>
    <sequence>
      <element name="workflowID" type="h1dc:UUID" />
      <element name="timeout-ms" type="xs:int" />
    </sequence>
  </complexType>
</element>

<!-- operation response element -->
<element name="getWorkflowFeedbackResponse">
  <complexType>
    <sequence>
      <element name="workflowStatus" type="h1dc:WorkflowStatus" />
      <element name="timeout-expired" type="xs:boolean" />
    </sequence>
  </complexType>
</element>

```

```

<element name="feedback" type="hldc:WorkflowFeedback"
  minOccurs="0" />
</sequence>
</complexType>
</element>

```

6.4.7. getWorkflowFeedbackById

Returns the requested feedback element.

6.4.7.1. Request elements

The getWorkflowFeedbackById request elements are given in ▶Table 6.24

Element name	Description
workflowID	hldc:UUID Reference to the workflow for which the next feedback element is requested.
feedbackId	xs:string The requested feedback ID.
timeout-rms	hldc:int Timeout in milliseconds for getting the feedback element. If the feedback element does not become available during this time, an error is returned. The server MAY cap the value. Negative values are interpreted as “infinity” which is subject to a server-imposed limit.

Table 6.24 getWorkflowFeedbackById - request elements

6.4.7.2. Response elements

The getWorkflowFeedbackById response elements are given in ▶Table 6.25.

Element name	Description
workflowStatus	hldc:WorkflowStatus Current execution status of the workflow.
timeout-expired	xs:boolean MUST be true if the requested feedback was not available before the timeout expired. MUST be false if the requested feedback was available in time.
feedback?	hldc:WorkflowFeedback The next available feedback element. Omitted in case of timeout.

Table 6.25 getWorkflowFeedbackById - response elements

6.4.7.3. Faults

The getWorkflowFeedbackById response elements are given in ▶Table 6.26.

Fault type	Cause
hldc:InvalidFeedbackId	Value of feedbackId is not defined in the workflow definition.
hldc:InvalidWorkflowId	Value of workflowID is invalid or has expired.

Table 6.26 getWorkflowFeedbackById - faults

6.4.7.4. WSDL Definition

```

<!-- operation request element -->
<element name="getWorkflowFeedbackById">
  <complexType>
    <sequence>
      <element name="workflowID" type="hldc:UUID" />
      <element name="feedbackId" type="xs:string" />
      <element name="timeout-ms" type="xs:int" />
    </sequence>
  </complexType>
</element>

<!-- operation response element -->
<element name="getWorkflowFeedbackByIdResponse">
  <complexType>
    <sequence>
      <element name="workflowStatus" type="hldc:WorkflowStatus" />
      <element name="timeout-expired" type="xs:boolean" />
      <element name="feedback" type="hldc:WorkflowFeedback"
        minOccurs="0" />
    </sequence>
  </complexType>
</element>

```

6.4.8. linkWorkflow

Links two executed workflows in order to allow execution of combined checks that refer to multiple documents or document sides. If the workflow status of the workflow `checkWorkflowID` is ok or finished, the workflow status is set to ok and all configured combined checks are executed. Combined checks that require information from a different document check will fetch this information from workflow `referredWorkflowID`. If the workflow status of the workflow `checkWorkflowID` is cancelled, calling `linkWorkflow` has no effect. If `checkWorkflowID` and `referredWorkflowID` are part of different check transactions, it is RECOMMENDED to call `tl:mergeTransaction` (see ▶Section 8.4.7) for these transactions.

6.4.8.1. Request elements

The `linkWorkflow` request elements are given in ▶Table 6.27.

Element name	Description
<code>checkWorkflowID</code>	hldc:UUID Reference to the workflow that contains combined checks which refer to multiple documents or multiple sides of a document.
<code>referredWorkflowID</code>	hldc:UUID Reference to the workflow from which additional data is fetched.

Table 6.27 `linkWorkflow` - request elements

6.4.8.2. Response elements

None.

6.4.8.3. Faults

The `linkWorkflow` faults are given in ▶Table 6.28.

Fault type	Cause
<code>hldc:InvalidWorkflowId</code>	Value of <code>checkWorkflowID</code> or <code>referredWorkflowID</code> is invalid or has expired or values of <code>checkWorkflowID</code> are <code>referredWorkflowID</code> identical.

Fault type	Cause
tl:ReadOnly	The transaction used by checkWorkflowIDis write-protected and must not be modified.

Table 6.28 linkWorkflow - faults

6.4.8.4. WSDL Definition

```

<!-- operation request element -->
<element name="linkWorkflow">
  <complexType>
    <sequence>
      <element name="checkWorkflowID" type="hldc:UUID" />
      <element name="referredWorkflowID" type="hldc:UUID" />
    </sequence>
  </complexType>
</element>

<!-- operation response element -->
<element name="linkWorkflowResponse">
  <complexType>
    <sequence>
      </sequence>
    </complexType>
  </element>

```

6.4.9. removeWorkflow

Removes a workflow definition which was previously loaded with addWorkflow. The server MUST ensure that workflow removal does not affect the execution of currently running workflows.

6.4.9.1. Request elements

The removeWorkflow faults are given in ▶ Table 6.29.

Element name	Description
workflowName	xs:string The name of the workflow to remove.

Table 6.29 removeWorkflow - request elements

6.4.9.2. Response elements

None.

6.4.9.3. Faults

The removeWorkflow faults are given in ▶ Table 6.30.

Fault type	Cause
hldc:WorkflowNotFound	The workflow workflowName does not exist on the server.

Table 6.30 removeWorkflow - faults

6.4.9.4. WSDL Definition

```

<!-- operation request element -->
<element name="removeWorkflow">
  <complexType>
    <sequence>
      <element name="workflowName" type="xs:string" />
    </sequence>
  </complexType>
</element>

```

```

</sequence>
</complexType>
</element>

<!-- operation response element -->
<element name="removeWorkflowResponse">
  <complexType>
    <sequence>
    </sequence>
  </complexType>
</element>

```

6.4.10. waitForNewDocument

Waits for a new document to be put onto the reader. If a new document is put onto the reader between to successive calls of `waitForNewDocument` with the same client ID within a certain time-frame (subject to server implementation), the second of these calls to `waitForNewDocument` SHOULD return immediately.

6.4.10.1. Request elements

The `waitForNewDocument` request elements are given in ▶Table 6.31.

Element name	Description
<code>client-id?</code>	<p><code>xs:string</code></p> <p>The client ID returned with the last call of <code>waitForNewDocument</code>. MUST be empty or omitted on first call. If empty or omitted, the server MUST generate a new client id.</p>
<code>timeout-ms</code>	<p><code>xs:int</code></p> <p>Time in milliseconds. If no new document is detected during this time period, the server SHALL abort waiting and return an error. The server MAY cap the value. Negative values are interpreted as “infinity” subject to a limit imposed by the server.</p>

Table 6.31 `waitForNewDocument` - request elements

6.4.10.2. Response elements

The `waitForNewDocument` response elements are given in ▶Table 6.32.

Element name	Description
<code>client-id</code>	<p><code>h1dc:UUID</code></p> <p>Server-generated client ID. MUST be a new ID if no or an invalid client ID was passed in the request. MUST be identical to the one in the request if a valid client ID was passed.</p>
<code>timeout-expired</code>	<p><code>xs:boolean</code></p> <p>MUST be <code>true</code> if no new document was detected before the timeout expired. MUST be <code>false</code> if a new document was detected in time (including a document detected between two calls of <code>waitForNewDocument</code> with the same <code>client-id</code>).</p>

Table 6.32 `waitForNewDocument` - response elements

6.4.10.3. WSDL Definition

```

<!-- operation request element -->
<element name="waitForNewDocument">
  <complexType>
    <sequence>
      <element name="client-id" type="h1dc:UUID" minOccurs="0" />
    </sequence>
  </complexType>
</element>

```

```

    <element name="timeout-ms" type="xs:int" />
  </sequence>
</complexType>
</element>

<!-- operation response element -->
<element name="waitForNewDocumentResponse">
  <complexType>
    <sequence>
      <element name="client-id" type="hldc:UUID" />
      <element name="timeout-expired" type="xs:boolean" />
    </sequence>
  </complexType>
</element>

```

6.5. Workflow definition schema

This section defines all elements of a workflow definition.

6.5.1. Workflow document

XML document that configures the execution workflow of the document check according to TR#03135 Part 1.

6.5.1.1. Root element

The Workflow root element is given in ▶Table 6.33.

Element name	Description
Workflow	wf:type.workflow Root element of the workflow definition.

Table 6.33 Workflow - root element

6.5.1.2. XSD Definition

```
<xs:element name="Workflow" type="wf:type.workflow" />
```

6.5.2. type.workflow

Root element of a HLDC workflow definition.

6.5.2.1. Attributes

The type.workflow attributes are given in ▶Table 6.34.

Attribute name	Description
schemaVersion	xs:decimal The schemaVersion currently has the value 1.

Table 6.34 type.workflow - attributes

6.5.2.2. Elements

The type.workflow elements are given in ▶Table 6.35.

Element name	Description
Information	wf:type.workflow.information Basic information about the workflow.

Element name	Description
ApplicationScenario	wf:type.workflow.scenario Information about the application scenario of the workflow.
RequestedSchemaVersion?	wf:type.workflow.versions The requested schema version of the [BSI TR-03135] XML.
Conditions?	wf:type.workflow.conditions Conditions for certain workflow actions.
AggregatedCheck?	wf:type.workflow.aggregation Defines an overall check result that aggregates the results of optical, electronic and seal checks.
ElectronicCheck?	wf:type.workflow.electronic Defines which electronic data shall be read and when the electronic checks should be performed.
OpticalCheck?	wf:type.workflow.optical Defines which optical data shall be read and when the optical checks should be performed.
SealCheck?	wf:type.workflow.seal Defines which barcode data shall be read and when the seal checks should be performed.
CombinedCheck?	wf:type.workflow.combined Defines which combined checks shall be performed.
Feedback?	wf:type.workflow.feedback Defines in which format the read data should be delivered to the application.
Dependencies?	wf:type.workflow.dependencies Defines dependencies between workflow actions.
Extension?	wf:type.workflow.extension Root node for implementation-specific workflow extensions.

Table 6.35 type.workflow - elements

6.5.2.3. XSD Definition

```

<xs:complexType name="type.workflow">
  <xs:sequence>
    <xs:element name="Information"
      type="wf:type.workflow.information" />
    <xs:element name="ApplicationScenario"
      type="wf:type.workflow.scenario" />
    <xs:element name="RequestedSchemaVersions" minOccurs="0"
      type="wf:type.workflow.versions" />
    <xs:element name="Conditions" minOccurs="0"
      type="wf:type.workflow.conditions" />
    <xs:element name="AggregatedCheck" minOccurs="0"
      type="wf:type.workflow.aggregation"/>
    <xs:element name="ElectronicCheck" minOccurs="0"
      type="wf:type.workflow.electronic" />
    <xs:element name="OpticalCheck" minOccurs="0"
      type="wf:type.workflow.optical" />
    <xs:element name="SealCheck" minOccurs="0"
      type="wf:type.workflow.seal"/>
    <xs:element name="CombinedCheck" minOccurs="0"

```



```

        type="wf:type.workflow.combined" />
<xs:element name="Feedback" minOccurs="0"
    type="wf:type.workflow.feedback" />
<xs:element name="Dependencies" minOccurs="0"
    type="wf:type.workflow.dependencies" />
<xs:element name="Extension" minOccurs="0"
    type="wf:type.workflow.extension" />
</xs:sequence>
<xs:attribute name="schemaVersion" type="xs:decimal" use="required" />
</xs:complexType>

```

6.5.3. type.workflow.information

Basic information about the workflow. MUST provide a workflow name and MAY contain additional information about the vendor, version and a textual description of the workflow.

6.5.3.1. Attributes

None.

6.5.3.2. Elements

The type.workflow elements are given in ▶Table 6.36.

Element name	Description
Vendor?	xs:string Vendor of the workflow.
Name	xs:string Name of the workflow. Serves as a reference in some calls. MUST NOT be empty.
Version?	xs:string Version of the workflow.
Description?	xs:string Textual description of the workflow.

Table 6.36 type.workflow.information - elements

6.5.3.3. XSD Definition

```

<xs:complexType name="type.workflow.information">
  <xs:sequence>
    <xs:element name="Vendor" minOccurs="0" type="xs:string" />
    <xs:element name="Name" >
      <xs:simpleType>
        <xs:restriction base="xs:string">
          <xs:minLength value="1" />
        </xs:restriction>
      </xs:simpleType>
    </xs:element>
    <xs:element name="Version" minOccurs="0" type="xs:string" />
    <xs:element name="Description" minOccurs="0" type="xs:string" />
  </xs:sequence>
</xs:complexType>

```

6.5.4. type.workflow.scenario

Selection of the server-defined application scenario which configures which checks are executed for a given document. The scenario MAY be customized with respect to optical, electronic and combined checks.

6.5.4.1. Attributes

The type.workflow.scenario attributes are given in ▶Table 6.37.

Attribute name	Description
preset	xs:string Selects a configuration preset. The available presets are server-defined.

Table 6.37 type.workflow.scenario - attributes

6.5.4.2. Elements

The type.workflow.scenario elements are given in ▶Table 6.38.

Element name	Description
OpticalChecks	wf:type.workflow.scenario.checks Configuration of optical checks.
ElectronicChecks	wf:type.workflow.scenario.checks Configuration of electronic checks.
CombinedChecks?	wf:type.workflow.scenario.checks Configuration of single-document combined checks.
CrossDocumentChecks	wf:type.workflow.scenario.checks Configuration of cross-document combined checks.
SealChecks	wf:type.workflow.scenario.checks Configuration of seal checks.
AggregatedChecks	wf:type.workflow.scenario.checks Configuration of the overall result aggregation.

Table 6.38 type.workflow.scenario - elements

6.5.4.3. XSD Definition

```
<xs:complexType name="type.workflow.scenario">
  <xs:sequence>
    <xs:element name="OpticalChecks" minOccurs="0"
      type="wf:type.workflow.scenario.checks" />
    <xs:element name="ElectronicChecks" minOccurs="0"
      type="wf:type.workflow.scenario.checks" />
    <xs:element name="CombinedChecks" minOccurs="0"
      type="wf:type.workflow.scenario.checks" />
    <xs:element name="CrossDocumentChecks" minOccurs="0"
      type="wf:type.workflow.scenario.checks" />
    <xs:element name="SealChecks" minOccurs="0"
      type="wf:type.workflow.scenario.checks" />
    <xs:element name="AggregatedChecks" minOccurs="0"
      type="wf:type.workflow.scenario.checks" />
  </xs:sequence>
  <xs:attribute name="preset" type="xs:string" use="required"/>
</xs:complexType>
```

6.5.5. type.workflow.scenario.checks

Workflow preset customization for the corresponding type of checks.

6.5.5.1. Attributes

None.

6.5.5.2. Elements

The `type.workflow.scenario.checks` elements are given in ▶Table 6.39.

Element name	Description
Check*	<code>wf:type.workflow.scenario.check</code> Configuration of a single check.

Table 6.39 `type.workflow.scenario.checks` - elements

6.5.5.3. XSD Definition

```
<xs:complexType name="type.workflow.scenario.checks">
  <xs:sequence>
    <xs:element name="Check" minOccurs="0" maxOccurs="unbounded"
      type="wf:type.workflow.scenario.check" />
  </xs:sequence>
</xs:complexType>
```

6.5.6. type.workflow.scenario.check

Customization of the application scenario preset with respect to a particular check.

6.5.6.1. Attributes

The `type.workflow.scenario.check` attributes are given in ▶Table 6.40.

Attribute name	Description
id	<code>xs:ID</code> The server-defined ID of the check to configure.
action	<code>wf:type.workflow.scenario.check.action</code> Determines whether the check should be executed or skipped.
condition?	<code>xs:IDREF</code> Reference to a condition. Controls under which circumstances this check configuration is applicable. MUST be considered fulfilled if empty or attribute was omitted.

Table 6.40 `type.workflow.scenario.check` - attributes

6.5.6.2. Elements

None.

6.5.6.3. XSD Definition

```
<xs:complexType name="type.workflow.scenario.check">
  <xs:attribute name="id" type="xs:ID" use="required" />
  <xs:attribute name="action"
    type="wf:type.workflow.scenario.check.action" use="required" />
  <xs:attribute name="condition" type="xs:IDREF" />
</xs:complexType>
```

6.5.7. type.workflow.scenario.check.action

Determines whether a check is executed or not (subject to conditional application). Derived from `xs:string`.

6.5.7.1. Values

The `type.workflow.scenario.check.action` values are given in ▶Table 6.41.

Element name	Description
<code>exec*</code>	The check MUST be performed if it is technically possible.
<code>skip</code>	The check MUST be skipped.
<code>eval</code>	The check MUST be performed if it is technically possible but the check result MUST NOT influence the overall result.

Table 6.41 `type.workflow.scenario.check.action` - values

6.5.7.2. XSD Definition

```
<xs:simpleType name="type.workflow.scenario.check.action">
  <xs:restriction base="xs:string">
    <xs:enumeration value="exec" />
    <xs:enumeration value="skip" />
    <xs:enumeration value="eval" />
  </xs:restriction>
</xs:simpleType>
```

6.5.8. type.workflow.versions

List of version information for the requested [BSI TR-03135] and HLDC feedback XML namespaces. The default values are given in ▶Table 6.42:

Namespace	Schema version
http://trdoccheck.bsi.bund.de/dc/ [http://trdoccheck.bsi.bund.de/dc/3] 4 [http://trdoccheck.bsi.bund.de/dc/3]	1
http://trdoccheck.bsi.bund.de/dce/4	1
http://trdoccheck.bsi.bund.de/dco/4	1
http://trdoccheck.bsi.bund.de/dcc/4	1
http://trdoccheck.bsi.bund.de/hlhc/workflow/2	Same as workflow definition.

Table 6.42 `type.workflow.versions`

6.5.8.1. Attributes

None.

6.5.8.2. Elements

The `type.workflow.versions` elements are given in ▶Table 6.43.

Element name	Description
SchemaVersion*	wf:type.workflow.versions.version Default: see above Version information.

Table 6.43 type.workflow.versions - elements

6.5.8.3. XSD Definition

```
<xs:complexType name="type.workflow.versions">
  <xs:sequence>
    <xs:element name="SchemaVersion" minOccurs="0" maxOccurs="unbounded"
      type="wf:type.workflow.versions.version" />
  </xs:sequence>
</xs:complexType>
```

6.5.9. type.workflow.versions.version

Requested XML schema version for a particular namespace.

6.5.9.1. Attributes

The type.workflow.versions.version attributes are given in ▶Table 6.44.

Attribute name	Description
namespace	xs:string The namespace identifier e.g. http://trdoccheck.bsi.bund.de/dc/ [http://trdoccheck.bsi.bund.de/dc/3] 4 [http://trdoccheck.bsi.bund.de/dc/3].
schemaVersion	xs:decimal The schema version of the namespace, e.g. 1

Table 6.44 type.workflow.versions.version - attributes

6.5.9.2. Elements

None.

6.5.9.3. XSD Definition

```
<xs:complexType name="type.workflow.versions.version">
  <xs:attribute name="namespace" type="xs:string" use="required" />
  <xs:attribute name="schemaVersion" type="xs:decimal" use="required" />
</xs:complexType>
```

6.5.10. type.workflow.conditions

List of conditions that MAY be used in other parts of the workflow definition to control workflow execution.

6.5.10.1. Attributes

None.

6.5.10.2. Elements

The elements MAY appear in any order.

The type.workflow.conditions elements are given in ▶Table 6.45.

Element name	Description
MRZCondition*	wf:type.workflow.conditions.mrz Conditions which evaluate data from the optical MRZ or, if CAN is used, from DG1
HasCANCondition*	wf:type.workflow.conditions.hascan Conditions which evaluate if a CAN was detected.
HasChipCondition*	wf:type.workflow.conditions.haschip Conditions which evaluate if an electronic chip was detected.
ParameterCondition*	wf:type.workflow.conditions.parameter Conditions whose fulfillment is controlled by the application.
AndCondition*	wf:type.workflow.conditions.and Conditions that constitute a logical conjunction of two conditions.
OrCondition*	wf:type.workflow.conditions.or Conditions that constitute a logical disjunction of two conditions.
NotCondition*	wf:type.workflow.conditions.not Conditions that negate the result of another condition.
XMLCondition*	wf:type.workflow.conditions.xml Conditions based on XPath expressions.

Table 6.45 type.workflow.versions.version - elements

6.5.10.3. XSD Definition

```

<xs:complexType name="type.workflow.conditions">
  <xs:choice minOccurs="0" maxOccurs="unbounded">
    <xs:element name="MRZCondition"
      type="wf:type.workflow.conditions.mrz" />
    <xs:element name="HasCANCondition"
      type="wf:type.workflow.conditions.hascan" />
    <xs:element name="HasChipCondition"
      type="wf:type.workflow.conditions.haschip" />
    <xs:element name="ParameterCondition"
      type="wf:type.workflow.conditions.parameter" />
    <xs:element name="AndCondition"
      type="wf:type.workflow.conditions.and" />
    <xs:element name="OrCondition"
      type="wf:type.workflow.conditions.or" />
    <xs:element name="NotCondition"
      type="wf:type.workflow.conditions.not" />
    <xs:element name="XMLCondition"
      type="wf:type.workflow.conditions.xml" />
  </xs:choice>
</xs:complexType>

```

6.5.11. type.workflow.conditions.mrz

Compares data from the optical MRZ to the specified data. The condition is fulfilled if the data match or if type, issuer and documentNumber are empty. If Password Authenticated Connection Establishment (PACE) with CAN is performed, the MRZ data is taken from DG1.

6.5.11.1. Attributes

The type.workflow.conditions.mrz attributes are given in ▶Table 6.46.

Attribute name	Description
id	xs:ID User-defined unique ID of the condition. Serves as reference.
type?	xs:string Perl-compatible regular expression (PCRE) to match the document type. Fill characters MUST be ignored. MUST match if empty or attribute was omitted.
issuer?	xs:string PCRE to match the issuer. Fill characters MUST be ignored. MUST match if empty or attribute was omitted.
issuer?	xs:string PCRE to match the document number. Fill characters MUST be ignored. MUST match if empty or attribute was omitted.

Table 6.46 type.workflow.conditions.mrz - attributes

6.5.11.2. Elements

None.

6.5.11.3. XSD Definition

```
<xs:complexType name="type.workflow.conditions.mrz">
  <xs:attribute name="id" type="xs:ID" use="required" />
  <xs:attribute name="type" type="xs:string" />
  <xs:attribute name="issuer" type="xs:string" />
  <xs:attribute name="documentNumber" type="xs:string" />
</xs:complexType>
```

6.5.12. type.workflow.conditions.hascan

Condition which is fulfilled if a card access number (CAN) is detected on the document.

6.5.12.1. Attributes

The type.workflow.conditions.hascan attributes are given in ▶Table 6.47.

Attribute name	Description
id	xs:ID User-defined unique ID of the condition. Serves as reference.

Table 6.47 type.workflow.conditions.hascan - attributes

6.5.12.2. Elements

None.

6.5.12.3. XSD Definition

```
<xs:complexType name="type.workflow.conditions.hascan">
  <xs:attribute name="id" type="xs:ID" use="required" />
</xs:complexType>
```

6.5.13. type.workflow.conditions.parameter

Condition whose fulfillment is controlled by the application. The application can override the value of the condition via `beginWorkflow`.

6.5.13.1. Attributes

The `type.workflow.conditions.parameter` attributes are given in ▶ Table 6.48.

Attribute name	Description
<code>id</code>	<code>xs:ID</code> User-defined unique ID of the condition. Serves as reference.
<code>default</code>	<code>xs:boolean</code> Default value of the condition.

Table 6.48 `type.workflow.conditions.parameter` - attributes

6.5.13.2. Elements

None.

6.5.13.3. XSD Definition

```
<xs:complexType name="type.workflow.conditions.parameter">
  <xs:attribute name="id" type="xs:ID" use="required" />
  <xs:attribute name="default" type="xs:boolean" use="required" />
</xs:complexType>
```

6.5.14. type.workflow.conditions.and

Constitutes a logical conjunction of multiple conditions. The condition is fulfilled if and only if all referenced conditions are fulfilled.

6.5.14.1. Attributes

The `type.workflow.conditions.and` attributes are given in ▶ Table 6.49.

Attribute name	Description
<code>id</code>	<code>xs:ID</code> Unique ID of the condition. Serves as reference.

Table 6.49 `type.workflow.conditions.and` - attributes

6.5.14.2. Elements

The `type.workflow.conditions.and` elements are given in ▶ Table 6.50.

Element name	Description
<code>c+</code>	<code>xs:IDREF</code> Reference to a condition. MUST be considered fulfilled if empty.

Table 6.50 `type.workflow.conditions.and` - elements

6.5.14.3. XSD Definition

```
<xs:complexType name="type.workflow.conditions.and">
  <xs:sequence>
    <xs:element name="c" type="xs:IDREF" maxOccurs="unbounded" />
  </xs:sequence>
</xs:complexType>
```



```

</xs:sequence>
<xs:attribute name="id" type="xs:ID" use="required" />
</xs:complexType>

```

6.5.15. type.workflow.conditions.or

Constitutes a logical conjunction of multiple conditions. The condition is fulfilled if and only if all referenced conditions are fulfilled.

6.5.15.1. Attributes

The type.workflow.conditions.or attributes are given in ▶ Table 6.51.

Attribute name	Description
id	xs:ID User-defined unique ID of the condition which is used as reference.

Table 6.51 type.workflow.conditions.or - attributes

6.5.15.2. Elements

The type.workflow.conditions.or elements are given in ▶ Table 6.52.

Element name	Description
c+	xs:IDREF Reference to a condition. MUST be considered fulfilled if empty.

Table 6.52 type.workflow.conditions.or - elements

6.5.15.3. XSD Definition

```

<xs:complexType name="type.workflow.conditions.or">
  <xs:sequence>
    <xs:element name="c" type="xs:IDREF" maxOccurs="unbounded" />
  </xs:sequence>
  <xs:attribute name="id" type="xs:ID" use="required" />
</xs:complexType>

```

6.5.16. type.workflow.conditions.not

Constitutes a logical negation of another condition. The condition is fulfilled if and only if the referenced condition is not fulfilled

6.5.16.1. Attributes

The type.workflow.conditions.not attributes are given in ▶ Table 6.53.

Attribute name	Description
id	xs:ID User-defined unique ID of the condition which is used as reference.
c	xs:IDREF Reference to a condition. MUST be considered fulfilled if empty.

Table 6.53 type.workflow.conditions.not - attributes

6.5.16.2. Elements

None.

6.5.16.3. XSD Definition

```
<xs:complexType name="type.workflow.conditions.not">
  <xs:attribute name="id" type="xs:ID" use="required" />
  <xs:attribute name="c" type="xs:IDREF" use="required" />
</xs:complexType>
```

6.5.17. type.workflow.conditions.xml

Compares the result of an XPath 1.0 expression with a specified value. If XPath result text and value match, the condition is fulfilled.

6.5.17.1. Attributes

The type.workflow.conditions.xml attributes are given in ▶Table 6.54.

Attribute name	Description
id	xs:ID User-defined unique ID of the condition. Serves as reference.
from	xs:IDREF Reference to a data element.
profile	xs:string Logging profile on which the evaluation of this condition is based.
path	xs:string XPath 1.0 expression which selects a node in the XML. If XPath expression matches multiple nodes, the comparison of this condition MUST consider the first matching node only. The comparison MUST only consider the inner text of the respective node.
value	xs:string The comparative value.

Table 6.54 type.workflow.conditions.xml - attributes

6.5.17.2. Elements

None.

6.5.17.3. XSD Definition

```
<xs:complexType name="type.workflow.conditions.xml" />
<xs:attribute name="id" type="xs:ID" use="required" />
<xs:attribute name="from" type="xs:IDREF" use="required" />
<xs:attribute name="profile" type="xs:string" use="required" />
<xs:attribute name="path" type="xs:string" use="required" />
<xs:attribute name="value" type="xs:string" use="required" />
</xs:complexType>
```

6.5.18. type.workflow.aggregation

Configuration of check process with respect to the aggregation of check results.

6.5.18.1. Attributes

The type.workflow.aggregation attributes are given in ▶Table 6.55.

Attributes name	Description
condition?	<p>xs:IDREF</p> <p>Reference to a condition. Controls whether this configuration is applicable. MUST be considered fulfilled if empty or attribute was omitted.</p>

Table 6.55 type.workflow.aggregation - attributes

6.5.18.2. Elements

The type.workflow.aggregation elements are given in ▶Table 6.56.

Element name	Description
ReadSequence	<p>wf:type.workflow.aggregation.readseq</p> <p>A sequence of the reading process.</p>

Table 6.56 type.workflow.aggregation- elements

6.5.18.3. XSD Definition

```
<xs:complexType name="type.workflow.aggregation">
  <xs:sequence>
    <xs:element name="ReadSequence" type="wf:type.workflow.aggregation.readseq" />
  </xs:sequence>
  <xs:attribute name="condition" type="xs:IDREF" />
</xs:complexType>
```

6.5.19. type.workflow.aggregation.readseq

The reading sequence.

6.5.19.1. Attributes

None.

6.5.19.1.1. Elements

The type.workflow.aggregation.readseq elements are given in ▶Table 6.56.

Element name	Description
AggregatedDocumentCheckResult	<p>wf:type.workflow.readseq.check</p> <p>A sequence of checks.</p>

Table 6.57 type.workflow.aggregation.readseq - elements

6.5.19.1.2. XSD Definition

```
<xs:complexType name="type.workflow.aggregation.readseq">
  <xs:choice minOccurs="0" maxOccurs="unbounded">
    <xs:element name="AggregatedDocumentCheckResult" type="wf:type.workflow.readseq.check" />
  </xs:choice>
</xs:complexType>
```

6.5.19.2. type.workflow.electronic

Configuration of the electronic reading and check process with respect to access protocols and the reading sequence.

6.5.19.2.1. Attributes

The type.workflow.electronic attributes are given in ▶Table 6.58.

Attribute name	Description
condition?	<p>xs:IDREF</p> <p>Reference to a condition. Controls whether this configuration is applicable. MUST be considered fulfilled if empty or attribute was omitted.</p>

Table 6.58 type.workflow.electronic - attributes

6.5.19.2.2. Elements

The type.workflow.electronic elements are given in ▶Table 6.59.

Element name	Description
AccessConfiguration?	<p>wf:type.workflow.electronic.access</p> <p>Conditional configuration of access protocols (Basic Access Control (BAC), PACE, PLAIN). MAY override server-side configuration.</p>
EACConfiguration?	<p>wf:type.workflow.electronic.eac</p> <p>R</p> <p>Conditional configuration of the extended access protocols (EAC) after PACE. MAY override server-side configuration.</p>
ChipConfiguration?	<p>wf:type.workflow.electronic.chip</p> <p>Conditional timeouts for chip detection.</p>
ReadSequence?	<p>wf:type.workflow.electronic.readseq</p> <p>Definition of the electronic reading sequence. Determines which electronic data is read in which order and when to perform the electronic checks.</p>

Table 6.59 type.workflow.electronic - elements

6.5.19.2.3. XSD Definition

```
<xs:complexType name="type.workflow.electronic">
  <xs:sequence>
    <xs:element name="AccessConfiguration" minOccurs="0"
      type="wf:type.workflow.electronic.access" />
    <xs:element name="EACConfiguration" minOccurs="0"
      type="wf:type.workflow.electronic.eac" />
    <xs:element name="ChipConfiguration" minOccurs="0"
      type="wf:type.workflow.electronic.chip" />
    <xs:element name="ReadSequence" minOccurs="0"
      type="wf:type.workflow.electronic.readseq" />
  </xs:sequence>
  <xs:attribute name="condition" type="xs:IDREF" />
</xs:complexType>
```

6.5.19.3. type.workflow.electronic.access

List of conditional configurations of the access protocol order (BAC, PACE, PLAIN).

6.5.19.3.1. Attributes

None.

6.5.19.3.2. Elements

The type.workflow.electronic.access elements are given in ▶Table 6.60.

Element name	Description
ProtocolOrder*	wf:type.workflow.electronic.access.order Conditional configurations of the access protocol order.

Table 6.60 type.workflow.electronic.access - elements

6.5.19.3.3. XSD Definition

```
<xs:complexType name="type.workflow.electronic.access">
  <xs:sequence>
    <xs:element name="ProtocolOrder" minOccurs="0" maxOccurs="unbounded"
      type="wf:type.workflow.electronic.access.order" />
  </xs:sequence>
</xs:complexType>
```

6.5.19.4. type.workflow.electronic.access.order

Conditional configurations of the access protocol order.

6.5.19.4.1. Attributes

The type.workflow.electronic.access.order attributes are given in ▶Table 6.61.

Attribute name	Description
condition?	xs:IDREF Reference to a condition. MUST be considered fulfilled if empty or attribute was omitted. If condition uses the special value DEFAULT, this protocol order applies if no other condition is fulfilled. If multiple DEFAULT-orders exist, the first one is used.
order	xs:string Comma separated (,) list of access protocol identifiers from the following list: <ul style="list-style-type: none"> • PLAIN • BAC • PACE The access protocols MUST be executed in the specified order until the first one succeeds.

Table 6.61 type.workflow.electronic.access.order - attributes

6.5.19.4.2. Elements

None.

6.5.19.4.3. XSD Definition

```
<xs:complexType name="type.workflow.electronic.access.order">
  <xs:attribute name="condition" type="xs:IDREF" />
  <xs:attribute name="order" type="xs:string" use="required" />
</xs:complexType>
```

6.5.19.5. type.workflow.electronic.eac

List of conditionally executed extended access protocols after PACE.

6.5.19.5.1. Attributes

None.

6.5.19.5.2. Elements

The `type.workflow.electronic.eac` elements are given in ▶Table 6.62.

Element name	Description
<code>AuthenticationAfterPACE*</code>	<code>wf:type.workflow.electronic.eac.authafterpace</code> Conditional configuration of an extended access protocol after PACE.

Table 6.62 `type.workflow.electronic.eac` - elements

6.5.19.5.3. XSD Definition

```
<xs:complexType name="type.workflow.electronic.eac">
  <xs:sequence>
    <xs:element name="AuthenticationAfterPACE" minOccurs="0"
      maxOccurs="unbounded"
      type="wf:type.workflow.electronic.eac.authafterpace" />
  </xs:sequence>
</xs:complexType>
```

6.5.19.6. `type.workflow.electronic.eac.authafterpace`

Conditional configuration of an extended access protocol (EAC).

6.5.19.6.1. Attributes

The `type.workflow.electronic.eac.authafterpace` attributes are given in ▶Table 6.63.

Attribute name	Description
<code>condition?</code>	<code>xs:IDREF</code> Reference to a condition. MUST be considered fulfilled if empty or attribute was omitted.
<code>method</code>	<code>wf:type.workflow.electronic.eac.authafterpace.method</code> The extended access protocol after PACE.

Table 6.63 `type.workflow.electronic.eac.authafterpace` - attributes

6.5.19.6.2. Elements

None.

6.5.19.6.3. XSD Definition

```
<xs:complexType name="type.workflow.electronic.eac.authafterpace">
  <xs:attribute name="condition" type="xs:IDREF" />
  <xs:attribute name="method"
    type="wf:type.workflow.electronic.eac.authafterpace.method"
    use="required" />
</xs:complexType>
```

6.5.19.7. `type.workflow.electronic.eac.authafterpace.method`

Allowed extended access protocols after PACE. Derived from `xs:string`.

6.5.19.7.1. Values

The `type.workflow.electronic.eac.authafterpace.method` values are given in ▶Table 6.64.

Value	Description
EAC2_AUTO	EAC2-compliant Chip Authentication (CA) and Terminal Authentication (TA) based on the version stored in EF.CardAccess. PACE is executed with CHAT. TA is executed with public key hash derived from PACE. Expect SAC document, if EF.CardAccess does not contain any TA/CA version information. After PACE, EAC1 will be performed. For documents with CAN, the document number from DG1 is used for TA static binding.
EAC2_CA1	EAC2-compliant CA v1 followed by TA v1. PACE is executed with CHAT. TA is executed with public key hash derived from PACE.
EAC2_TA2	EAC2-compliant TA v2 followed by CA v2. PACE is executed with CHAT. TA is executed public with key hash derived from PACE.
EAC1_CHAT	EAC1.11-compliant CA and TA. PACE is executed with CHAT. TA is executed with document number from MRZ
EAC1	EAC1.11-compliant CA and TA. PACE is executed without CHAT (CAR is read from EV.CVCA). TA is executed with document number from MRZ.

Table 6.64 type.workflow.electronic.eac.authafterpace.method - values

6.5.19.7.2. XSD Definition

```
<xs:simpleType name="type.workflow.electronic.eac.authafterpace.method">
  <xs:restriction base="xs:string">
    <xs:enumeration value="EAC2_AUTO" />
    <xs:enumeration value="EAC2_CA1" />
    <xs:enumeration value="EAC2_TA2" />
    <xs:enumeration value="EAC1_CHAT" />
    <xs:enumeration value="EAC1" />
  </xs:restriction>
</xs:simpleType>
```

6.5.19.8. type.workflow.electronic.chip

List of conditional timeout configurations for chip detection.

6.5.19.8.1. Attributes

None.

6.5.19.8.2. Elements

The type.workflow.electronic.chip elements are given in ▶Table 6.65.

Element name	Description
WaitForChip*	wf:type.workflow.electronic.chip.waitforchip Configuration of a conditional chip detection timeout.

Table 6.65 type.workflow.electronic.chip - elements

6.5.19.8.3. XSD Definition

```
<xs:complexType name="type.workflow.electronic.chip">
```

```

<xs:sequence>
  <xs:element name="WaitForChip" minOccurs="0" maxOccurs="unbounded"
    type="wf:type.workflow.electronic.chip.waitforchip" />
</xs:sequence>
</xs:complexType>

```

6.5.19.9. type.workflow.electronic.chip.waitforchip

Conditional chip detection timeout. Before starting the electronic reading process, the server **MUST** wait for the specified time period unless the chip is detected successfully earlier. If omitted, the server **MAY** start reading the chip immediately.

6.5.19.9.1. Attributes

The type.workflow.electronic.chip.waitforchip elements are given in ▶Table 6.66.

Attribute name	Description
condition?	xs:IDREF Reference to a condition. MUST be considered fulfilled if empty or attribute was omitted.
timeInMs	xs:int Chip detection timeout in milliseconds.
intervalInMs?	xs:int Default: 500 Polling interval in milliseconds. During timeInMs, the server SHOULD wait at least intervalInMs milliseconds between attempts to detect the chip.

Table 6.66 type.workflow.electronic.chip.waitforchip - attributes

6.5.19.9.2. Elements

None.

6.5.19.9.3. XSD Definition

```

<xs:complexType name="type.workflow.electronic.chip.waitforchip">
  <xs:attribute name="condition" type="xs:IDREF" />
  <xs:attribute name="timeInMs" type="xs:int" use="required" />
  <xs:attribute name="intervalInMs" type="xs:int" default="500" />
</xs:complexType>

```

6.5.19.10. type.workflow.electronic.readseq

List of read and check operations to perform. The execution order corresponds to the order of the definition.

6.5.19.10.1. Attributes

None.

6.5.19.10.2. Elements

The elements **MAY** appear in any order.

The type.workflow.electronic.readseq elements are given in ▶Table 6.67.

Element name	Description
Datagroup*	wf:type.workflow.electronic.readseq.datagroup Reads an electronic data group.

Element name	Description
ElectronicCheck*	wf:type.workflow.readseq.check Performs an electronic document check according to [BSI TR-03135].
DefectInfo*	wf:type.workflow.electronic.readseq.defectinfo Reads known defects for the document.
ChipDetection*	wf:type.workflow.electronic.readseq.chipdetection Checks for the presence of a radio-frequency identification (RFID) chip in the reading field. The result can be acquired by a text feedback element.

Table 6.67 type.workflow.electronic.readseq - elements.

6.5.19.10.3. XSD Definition

```
<xs:complexType name="type.workflow.electronic.readseq">
  <xs:choice minOccurs="0" maxOccurs="unbounded">
    <xs:element name="Datagroup"
      type="wf:type.workflow.electronic.readseq.datagroup" />
    <xs:element name="ElectronicCheck"
      type="wf:type.workflow.readseq.check" />
    <xs:element name="DefectInfo"
      type="wf:type.workflow.electronic.readseq.defectinfo" />
    <xs:element name="ChipDetection"
      type="wf:type.workflow.electronic.readseq.chipdetection" />
  </xs:choice>
</xs:complexType>
```

6.5.19.11. type.workflow.electronic.readseq.datagroup

Configuration of conditional reading of data groups.

6.5.19.11.1. Attributes

The type.workflow.electronic.readseq.datagroup attributes are given in ▶Table 6.68.

Attribute name	Description
id	xs:ID User-defined unique ID. Serves as reference.
application	wf:type.workflow.electronic.readseq.datagroup.application The document application from which the data group is to be read.
number	xs:int The number of the data group to read.
condition?	xs:IDREF Reference to a condition. Controls whether this configuration is applicable. MUST be considered fulfilled if empty or omitted.
required?	xs:boolean Default: false Specifies whether reading this data group is imperative for the respective application. If not, failure to read the data group MUST NOT negatively affect corresponding data integrity checks.

Table 6.68 type.workflow.electronic.readseq.datagroup - attributes

6.5.19.11.2. Elements

None.

6.5.19.11.3. XSD Definition

```
<xs:complexType name="type.workflow.electronic.readseq.datagroup">
  <xs:attribute name="id" type="xs:ID" use="required" />
  <xs:attribute name="application"
    type="wf:type.workflow.electronic.readseq.datagroup.application"
    use="required" />
  <xs:attribute name="number" type="xs:int" use="required" />
  <xs:attribute name="condition" type="xs:IDREF" />
  <xs:attribute name="required" type="xs:boolean" default="false" />
</xs:complexType>
```

6.5.19.12. type.workflow.electronic.readseq.datagroup.application

Selects the document application for datagroup reading.

6.5.19.12.1. Values

The type.workflow.electronic.readseq.datagroup.application values are given in ▶Table 6.69.

Value	Description
International Civil Aviation Organization (ICAO)	ICAO ePassport datagroups
GermanID	German Electronic Identity Document (eID) datagroups

Table 6.69 type.workflow.electronic.readseq.datagroup.application - values

6.5.19.12.2. XSD Definition

```
<xs:simpleType name="type.workflow.electronic.readseq.datagroup.application">
  <xs:restriction base="xs:string">
    <xs:enumeration value="ICAO" />
    <xs:enumeration value="GermanID" />
  </xs:restriction>
</xs:simpleType>
```

6.5.19.13. type.workflow.electronic.readseq.defectinfo

Conditional reading of the known defects regarding the current document.

6.5.19.13.1. Attributes

The type.workflow.electronic.readseq.defectinfo attributes are given in ▶Table 6.70.

Attribute name	Description
id	xs:ID User-defined unique ID. Serves as reference.
condition?	xs:IDREF Reference to a condition. Controls whether this configuration is applicable. MUST be considered fulfilled if empty or attribute was omitted.

Table 6.70 type.workflow.electronic.readseq.defectinfo - attributes

6.5.19.13.2. Elements

None.

6.5.19.13.3. XSD Definition

```
<xs:complexType name="type.workflow.electronic.readseq.defectinfo">
  <xs:attribute name="id" type="xs:ID" use="required" />
  <xs:attribute name="condition" type="xs:IDREF" />
</xs:complexType>
```

6.5.19.14. type.workflow.electronic.readseq.chipdetection

Checking for the presence of an RFID chip in the reading field.

6.5.19.14.1. Attributes

The type.workflow.electronic.readseq.chipdetection attributes are given in ▶Table 6.71.

Attribute name	Description
id	xs:ID User-defined unique ID. Serves as reference.
condition?	xs:IDREF Reference to a condition. Controls whether this configuration is applicable. MUST be considered fulfilled if empty or attribute was omitted.

Table 6.71 type.workflow.electronic.readseq.chipdetection - attributes

6.5.19.14.2. Elements

None.

6.5.19.14.3. XSD Definition

```
<xs:complexType name="type.workflow.electronic.readseq.chipdetection">
  <xs:attribute name="id" type="xs:ID" use="required" />
  <xs:attribute name="condition" type="xs:IDREF" />
</xs:complexType>
```

6.5.19.15. type.workflow.electronic.readseq.elementaryfile

Configuration of conditional reading of elementary files.

6.5.19.15.1. Attributes

The type.workflow.electronic.readseq.elementaryfile attributes are given in ▶Table 6.72.

Attribute name	Description
id	xs:ID User-defined unique ID. Serves as reference.
name	wf:type.workflow.electronic.readseq.elementaryfile.name The elementary file to be read.
condition?	xs:IDREF Reference to a condition. Controls whether this configuration is applicable. MUST be considered fulfilled if empty or omitted.
required?	xs:boolean Default: false Specifies whether reading this elementary file is imperative for the respective application.

Table 6.72 type.workflow.electronic.readseq.elementaryfile - attributes

6.5.19.15.2. Elements

None.

6.5.19.15.3. XSD Definition

```
<xs:complexType name="type.workflow.electronic.readseq.elementaryfile">
  <xs:attribute name="id" type="xs:ID" use="required" />
  <xs:attribute name="name"
    type="wf:type.workflow.electronic.readseq.elementaryfile.name"
    use="required" />
  <xs:attribute name="condition" type="xs:IDREF" />
  <xs:attribute name="required" type="xs:boolean" default="false" />
</xs:complexType>
```

6.5.19.16. type.workflow.electronic.readseq.elementaryfile.name

Selects the elementary file for reading by its name.

6.5.19.16.1. Values

The type.workflow.electronic.readseq.elementaryfile.name values are given in ▶Table 6.73.

Value	Description
ef_sod	EF.SoD
ef_card_security	EF.CardSecurity
ef_chip_security	EF.ChipSecurity
ef_com	EF.COM
ef_cvca	EF.CVCA
ef_card_access	EF.CardAccess
ef_atr_info	EF.ATR_INFO

Table 6.73 type.workflow.electronic.readseq.elementaryfile.name - values

6.5.19.16.2. XSD Definition

```
<xs:simpleType name="type.workflow.electronic.readseq.elementaryfile.name">
  <xs:restriction base="xs:string">
    <xs:enumeration value="ef_sod" />
    <xs:enumeration value="ef_card_security" />
    <xs:enumeration value="ef_chip_security" />
    <xs:enumeration value="ef_com" />
    <xs:enumeration value="ef_cvca" />
    <xs:enumeration value="ef_card_access" />
    <xs:enumeration value="ef_atr_info" />
  </xs:restriction>
</xs:simpleType>
```

6.5.19.17. type.workflow.optical

Configuration of the optical reading and check process with respect to document validity definition and the optical reading sequence.

6.5.19.17.1. Attributes

The type.workflow.optical attributes are given in ▶Table 6.74.

Attribute name	Description
condition?	<p>xs:IDREF</p> <p>Reference to a condition. Controls whether this configuration is applicable. MUST be considered fulfilled if empty or attribute was omitted.</p>

Table 6.74 type.workflow.optical - attributes

6.5.19.17.2. Elements

The type.workflow.optical elements are given in ▶Table 6.75.

Element name	Description
DocValidityConfiguration?	<p>wf:type.workflow.optical.validity</p> <p>Document validity configuration. If omitted, a configuration with a default validity period of 10 years is used.</p>
ReadSequence?	<p>wf:type.workflow.optical.readseq</p> <p>Definition of the optical reading sequence. Determines which optical data is read in which order and when to perform the optical checks.</p>

Table 6.75 type.workflow.optical - elements

6.5.19.17.3. XSD Definition

```
<xs:complexType name="type.workflow.optical">
  <xs:sequence>
    <xs:element name="DocValidityConfiguration" minOccurs="0"
      type="wf:type.workflow.optical.validity" />
    <xs:element name="ReadSequence" minOccurs="0"
      type="wf:type.workflow.optical.readseq" />
  </xs:sequence>
  <xs:attribute name="condition" type="xs:IDREF" />
</xs:complexType>
```

6.5.19.18. type.workflow.optical.validity

List of document validity configurations.

6.5.19.18.1. Attributes

None.

6.5.19.18.2. Elements

The type.workflow.optical.validity elements are given in ▶Table 6.76.

Element name	Description
DocValidity*	<p>wf:type.workflow.optical.validity.element</p> <p>Conditional document validity configuration.</p>

Table 6.76 type.workflow.optical.validity - elements

6.5.19.18.3. XSD Definition

```
<xs:complexType name="type.workflow.optical.validity">
  <xs:sequence>
    <xs:element name="DocValidity"
      type="wf:type.workflow.optical.validity.element"
      minOccurs="0" maxOccurs="unbounded" />
  </xs:sequence>
```

```
</xs:complexType>
```

6.5.19.19. type.workflow.optical.validity.element

Conditional configuration of the document validity.

6.5.19.19.1. Attributes

The type.workflow.optical.validity.element attributes are given in ▶Table 6.77.

Attribute name	Description
condition	<p>xs:IDREF</p> <p>Reference to a condition. Controls whether this configuration is applicable. MUST be considered fulfilled if empty. If condition uses the special value DEFAULT, this configuration applies if no other condition is fulfilled. If multiple DEFAULT-configurations exist, the first one is used.</p>
validityInYears	<p>xs:unsignedInt</p> <p>Document validity in years.</p>
toleranceInDays?	<p>xs:int</p> <p>Default: 0</p> <p>Tolerance in days after document expiration for which the document is still considered valid. This value is used in the optical document check. This value can also be negative to indicate that a document is already considered as invalid before its regular expiration.</p>

Table 6.77 type.workflow.optical.validity.element - attributes

6.5.19.19.2. Elements

None.

6.5.19.19.3. XSD Definition

```
<xs:complexType name="type.workflow.optical.validity.element">
  <xs:attribute name="condition" type="xs:IDREF" use="required" />
  <xs:attribute name="validityInYears" type="xs:unsignedInt" use="required" />
  <xs:attribute name="toleranceInDays" type="xs:unsignedInt" default="0" />
</xs:complexType>
```

6.5.19.20. type.workflow.optical.readseq

List of optical read and check operations to perform. The execution order corresponds to the order of the definition.

6.5.19.20.1. Attributes

None.

6.5.19.20.2. Elements

The elements MAY appear in any order.

The type.workflow.optical.readseq elements are given in ▶Table 6.78.

Element name	Description
Text*	<p>wf:type.workflow.optical.readseq.element</p> <p>Reads a text field.</p>

Element name	Description
Binary*	wf:type.workflow.optical.readseq.element Reads a binary field.
Image*	wf:type.workflow.optical.readseq.element Reads an image field.
OpticalCheck*	wf:type.workflow.readseq.check Performs optical document checks according to [BSI TR-03135].

Table 6.78 type.workflow.optical.readseq - elements

6.5.19.20.3. XSD Definition

```
<xs:complexType name="type.workflow.optical.readseq">
  <xs:choice minOccurs="0" maxOccurs="unbounded">
    <xs:element name="Text" type="wf:type.workflow.optical.readseq.element">
    <xs:element name="Binary" type="wf:type.workflow.optical.readseq.element">
    <xs:element name="Image" type="wf:type.workflow.optical.readseq.element">
    <xs:element name="OpticalCheck"
      type="wf:type.workflow.readseq.check">
  </xs:choice>
</xs:complexType>
```

6.5.19.21. type.workflow.optical.readseq.element

Conditionally specifies which optical data is to be read.

6.5.19.21.1. Attributes

The type.workflow.optical.readseq.element attributes are given in ▶Table 6.79.

Attributes name	Description
id	xs:ID User-defined unique ID. Serves as reference.
field	xs:string Server-defined reference to the field to read.
condition?	xs:IDREF Reference to a condition. Controls whether this configuration is applicable. MUST be considered fulfilled if empty or attribute was omitted.

Table 6.79 type.workflow.optical.readseq.element - attributes

6.5.19.21.2. Elements

None.

6.5.19.21.3. XSD Definition

```
<xs:complexType name="type.workflow.optical.readseq.element">
  <xs:attribute name="id" type="xs:ID" use="required">
  <xs:attribute name="field" type="xs:string" use="required">
  <xs:attribute name="condition" type="xs:IDREF" >
</xs:complexType>
```

6.5.19.22. type.workflow.combined

Configuration of the combined reading and check process.

6.5.19.22.1. Attributes

The type.workflow.combined attributes are given in ▶Table 6.80.

Attributes name	Description
condition?	xs:IDREF Reference to a condition. Controls whether this configuration is applicable. MUST be considered fulfilled if empty or attribute was omitted.

Table 6.80 type.workflow.combined - attributes

6.5.19.22.2. Elements

The type.workflow.combined elements are given in ▶Table 6.81.

Element name	Description
ReadSequence?	wf:type.workflow.combined.readseq Definition of the combined reading sequence. Determines which combined data is read in which order and when to perform the combined checks.

Table 6.81 type.workflow.combined - elements

6.5.19.22.3. XSD Definition

```
<xs:complexType name="type.workflow.combined">
  <xs:sequence>
    <xs:element name="ReadSequence" minOccurs="0"
      type="wf:type.workflow.combined.readseq" />
  </xs:sequence>
  <xs:attribute name="condition" type="xs:IDREF" />
</xs:complexType>
```

6.5.19.23. type.workflow.combined.readseq

List of combined check operations to perform. The execution order corresponds to the order of the definition.

6.5.19.23.1. Attributes

None.

6.5.19.23.2. Elements

The elements MAY appear in any order.

The type.workflow.combined.readseq elements are given in ▶Table 6.82.

Element name	Description
CombinedCheck*	wf:type.workflow.readseq.check A single-document combined check.
CrossCheck*	wf:type.workflow.readseq.check A cross-document combined check.

Table 6.82 type.workflow.combined.readseq - elements

6.5.19.23.3. XSD Definition

```
<xs:complexType name="type.workflow.combined.readseq">
  <xs:choice minOccurs="0" maxOccurs="unbounded">
    <xs:element name="CombinedCheck" type="wf:type.workflow.readseq.ccheck" />
  </xs:choice>
</xs:complexType>
```



```
<xs:element name="CrossCheck" type="wf:type.workflow.readseq.ccheck" />
</xs:choice>
</xs:complexType>
```

6.5.19.24. type.workflow.readseq.check

Conditional execution of a particular document check according to [BSI TR-03135].

6.5.19.24.1. Attributes

The type.workflow.readseq.check attributes are given in ▶Table 6.83.

Attribute name	Description
id	xs:ID User-defined unique ID. Serves as reference.
condition?	xs:IDREF Reference to a condition. Controls whether this configuration is applicable. MUST be considered fulfilled if empty or attribute was omitted.

Table 6.83 type.workflow.readseq.check - attributes

6.5.19.24.2. Elements

None.

6.5.19.24.3. XSD Definition

```
<xs:complexType name="type.workflow.readseq.check">
  <xs:attribute name="id" type="xs:ID" use="required" />
  <xs:attribute name="condition" type="xs:IDREF" />
</xs:complexType>
```

6.5.19.25. type.workflow.readseq.defect

Conditional execution of a particular document defect according to [BSI TR-03135].

6.5.19.25.1. Attributes

The type.workflow.readseq.defect attributes are given in ▶Table 6.84.

Attribute name	Description
id	xs:ID User-defined unique ID. Serves as reference.
condition?	xs:IDREF Reference to a condition. Controls whether this configuration is applicable. MUST be considered fulfilled if empty or attribute was omitted.

Table 6.84 type.workflow.readseq.defect - attributes

6.5.19.25.2. Elements

None.

6.5.19.25.3. XSD Definition

```
<xs:complexType name="type.workflow.readseq.defect"/>
<xs:attribute name="id" type="xs:ID" use="required"/>
<xs:attribute name="condition" type="xs:IDREF"/>
</xs:complexType>
```

6.5.19.26. type.workflow.feedback

List of feedback elements that provide data from the elements of the electronic, optical and combined reading sequences. The feedback elements are the only data that are delivered to the application. Feedback is provided in the feedback loop.

6.5.19.26.1. Attributes

None.

6.5.19.26.2. Elements

The elements MAY appear in any order.

The type.workflow.feedback elements are given in ▶Table 6.85.

Element name	Description
Binary*	wf:type.workflow.feedback.binary Returns binary data to the application.
Text*	wf:type.workflow.feedback.text Returns text data to the application.
Image*	wf:type.workflow.feedback.image Returns image data to the application.
XML*	wf:type.workflow.feedback.xml Returns XML data to the application.

Table 6.85 type.workflow.feedback - elements

6.5.19.26.3. XSD Definition

```
<xs:complexType name="type.workflow.feedback">
  <xs:choice minOccurs="0" maxOccurs="unbounded">
    <xs:element name="Binary" type="wf:type.workflow.feedback.binary" />
    <xs:element name="Text" type="wf:type.workflow.feedback.text" />
    <xs:element name="Image" type="wf:type.workflow.feedback.image" />
    <xs:element name="XML" type="wf:type.workflow.feedback.xml" />
  </xs:choice>
</xs:complexType>
```

6.5.19.27. type.workflow.seal

Configuration of the seal reading and check process with respect to document validity definition and the seal reading sequence.

6.5.19.27.1. Attributes

The type.workflow.seal are given in ▶Table 6.86.

Attribute name	Description
condition?	xs:IDREF Reference to a condition. Controls whether this configuration is applicable. MUST be considered fulfilled if empty or attribute was omitted.

Table 6.86 type.workflow.seal - attributes

6.5.19.27.2. Elements

The `type.workflow.seal.readseq` elements are given in ▶Table 6.87.

Element name	Description
ReadSequence?	<code>wf:type.workflow.seal.readseq</code> Definition of the seal reading sequence. Determines which seal data is read in which order and when to perform the seal checks.

Table 6.87 `type.workflow.seal` - elements

6.5.19.27.3. XSD Definition

```
<xs:complexType name="type.workflow.seal">
  <xs:sequence>
    <xs:element name="ReadSequence" minOccurs="0" type="wf:type.workflow.seal.readseq"/>
  </xs:sequence>
  <xs:attribute name="condition" type="xs:IDREF"/>
</xs:complexType>
```

6.5.19.28. `type.workflow.electronic.readseq`

List of read and check operations to perform. The execution order corresponds to the order of the definition.

6.5.19.28.1. Attributes

None.

6.5.19.28.2. Elements

The elements MAY appear in any order.

The `type.workflow.seal.readseq` elements are given in ▶Table 6.88.

Element name	Description
Data*	<code>wf:type.workflow.seal.readseq.data</code> Reads the seal data.
Check*	<code>wf:type.workflow.readseq.check</code> Performs a digital seal document check according to [BSI TR-03135].
Defect	<code>wf:type.workflow.readseq.defect</code> Reads known defects for the document.

Table 6.88 `type.workflow.electronic.readseq` - elements.

6.5.19.28.3. XSD Definition

```
<xs:complexType name="type.workflow.seal.readseq">
  <xs:choice minOccurs="0" maxOccurs="unbounded">
    <xs:element name="Data" type="wf:type.workflow.seal.readseq.data"/>
    <xs:element name="Defect" type="wf:type.workflow.readseq.defect"/>
    <xs:element name="Check" type="wf:type.workflow.readseq.check"/>
  </xs:choice>
</xs:complexType>
```

6.5.19.29. `type.workflow.seal.readseq.data`"

Configuration of conditional reading of data.

6.5.19.29.1. Attributes

The `type.workflow.seal.readseq.data` attributes are given in ▶Table 6.89.

Attribute name	Description
<code>id</code>	<code>xs:ID</code> User-defined unique ID. Serves as reference.
<code>profile</code>	<code>wf:type.workflow.seal.readseq.data.profilen</code> The document profile from which the data is to be read.
<code>condition?</code>	<code>xs:IDREF</code> Reference to a condition. Controls whether this configuration is applicable. MUST be considered fulfilled if empty or omitted.
<code>required?</code>	<code>xs:boolean</code> Default: <code>false</code> Specifies whether reading this data group is imperative for the respective application. If not, failure to read the data group MUST NOT negatively affect corresponding data integrity checks.

Table 6.89 `type.workflow.seal.readseq.data` - attributes

6.5.19.29.2. Elements

None.

6.5.19.29.3. XSD Definition

```
<xs:complexType name="type.workflow.seal.readseq.data">
  <xs:attribute name="id" type="xs:ID" use="required"/>
  <xs:attribute name="profile" type="wf:type.workflow.seal.readseq.data.profilen" use="required"/>
  <xs:attribute name="condition" type="xs:IDREF"/>
  <xs:attribute name="required" type="xs:boolean"/>
</xs:complexType>
```

6.5.19.30. type.workflow.feedback.binary

Requests binary data feedback. Binary data is always returned in the `binaryFeedback` element. It is only available for electronic data groups.

6.5.19.30.1. Attributes

The `type.workflow.feedback.binary` attributes are given in ▶Table 6.90.

Attribute name	Description
<code>id</code>	<code>xs:ID</code> User-defined unique ID. Serves as reference.
<code>from</code>	<code>xs:IDREF</code> Reference to a data element. Referenced element MUST be of type <code>type.workflow.electronic.readseq.datagroup</code> .
<code>condition?</code>	<code>xs:IDREF</code> References a condition. Controls whether the feedback element is delivered. MUST be considered fulfilled if empty or attribute was omitted.

Attribute name	Description
onRequestOnly?	<p>xs:boolean</p> <p>Default: false</p> <p>Controls whether the feedback element is available as part of the general feedback loop via <code>getWorkflowFeedback</code> or only upon explicit request via <code>getWorkflowFeedbackById</code>.</p>

Table 6.90 type.workflow.feedback.binary - attributes

6.5.19.30.2. Elements

None.

6.5.19.30.3. XSD Definition

```
<xs:complexType name="type.workflow.feedback.binary">
  <xs:attribute name="id" type="xs:ID" use="required" />
  <xs:attribute name="from" type="xs:IDREF" use="required" />
  <xs:attribute name="condition" type="xs:IDREF" />
  <xs:attribute name="onRequestOnly" type="xs:boolean" default="false" />
</xs:complexType>
```

6.5.19.31. type.workflow.feedback.text

Requests text data feedback. Text data is always returned in the `stringFeedback` element.

6.5.19.31.1. Attributes

The `type.workflow.feedback.text` attributes are given in ▶ Table 6.91.

Attribute name	Description
id	<p>xs:ID</p> <p>User-defined unique ID. Serves as reference.</p>
from	<p>xs:IDREF</p> <p>Reference to a data element. MUST reference any of the following:</p> <ul style="list-style-type: none"> • ICAO data group 1 • eID data group 19 • eID data group 20 • any optical text field
condition?	<p>xs:IDREF</p> <p>References a condition. Controls whether the feedback element is delivered. MUST be considered fulfilled if empty or attribute was omitted.</p>
onRequestOnly?	<p>xs:boolean</p> <p>Default: false</p> <p>Controls whether the feedback element is available as part of the general feedback loop via <code>getWorkflowFeedback</code> or only upon explicit request via <code>getWorkflowFeedbackById</code>.</p>

Table 6.91 type.workflow.feedback.text - attributes

6.5.19.31.2. Elements

None.

6.5.19.31.3. XSD Definition

```
<xs:complexType name="type.workflow.feedback.text">
  <xs:attribute name="id" type="xs:ID" use="required" />
  <xs:attribute name="from" type="xs:IDREF" use="required" />
  <xs:attribute name="condition" type="xs:IDREF" />
  <xs:attribute name="onRequestOnly" type="wf:type.yesno" default="false" />
</xs:complexType>
```

6.5.19.32. type.workflow.feedback.image

Requests image data feedback. Image data is always returned in the `binaryFeedback` field.

6.5.19.32.1. Attributes

The `type.workflow.feedback.image` attributes are given in ▶Table 6.92.

Attribute name	Description
<code>id</code>	<code>xs:ID</code> Unique ID. Serves as reference.
<code>from</code>	<code>xs:IDREF</code> Reference to a data element. MUST reference any of the following: <ul style="list-style-type: none"> • ICAO data group 2 • ICAO data group 3 • ICAO data group 4 • ICAO data group 7 • any optical image field
<code>format?</code>	<code>wf:type.workflow.feedback.image.format</code> Requested image format. If omitted, the image is delivered in the original format.
<code>size?</code>	<code>xs:string</code> Requested image size in format <code><Width>x<Height></code> (e.g. <code>1000x800</code>). If omitted, the image is delivered in the original image size.
<code>preserveAspectRatio?</code>	<code>xs:boolean</code> Default: <code>true</code> Controls whether the aspect ratio of the image is preserved on scaling.
<code>index?</code>	<code>xs:unsignedInt</code> Requested image index for <code>from</code> elements that may provide more than one image.
<code>condition?</code>	<code>xs:IDREF</code> References a condition. Controls whether the feedback element is delivered. MUST be considered fulfilled if empty or attribute was omitted.
<code>onRequestOnly?</code>	<code>xs:boolean</code> Default: <code>false</code> Controls whether the feedback element is available as part of the general feedback loop via <code>getWorkflowFeedback</code> or only upon explicit request via <code>getWorkflowFeedbackById</code> .

Table 6.92 `type.workflow.feedback.image` - attributes

6.5.19.32.2. Elements

None.

6.5.19.32.3. XSD Definition

```
<xs:complexType name="type.workflow.feedback.image">
  <xs:attribute name="id" type="xs:ID" use="required" />
  <xs:attribute name="from" type="xs:IDREF" use="required" />
  <xs:attribute name="format" type="wf:type.workflow.feedback.image.format" />
  <xs:attribute name="size" type="xs:string" />
  <xs:attribute name="preserveAspectRatio" type="xs:boolean" default="true" />
  <xs:attribute name="index" type="xs:unsignedInt" />
  <xs:attribute name="condition" type="xs:IDREF" />
  <xs:attribute name="onRequestOnly" type="xs:boolean" default="false" />
</xs:complexType>
```

6.5.19.33. type.workflow.feedback.xml

Requests XML-formatted feedback. XML data is always returned in the `stringFeedback` field.

6.5.19.33.1. Attributes

The `type.workflow.feedback.xml` attributes are given in ▶Table 6.93.

Attribute name	Description
id	xs:ID Unique ID. Serves as reference.
from	xs:IDREF Reference to a data element. MUST reference any of the following: <ul style="list-style-type: none"> • ICAO data group 1 • ICAO data group 2 • ICAO data group 3 • ICAO data group 4 • ICAO data group 11 • ICAO data group 12 • any field of type <ul style="list-style-type: none"> • <code>type.workflow.electronic.readseq.defectinfo</code> • <code>type.workflow.readseq.check</code>
format?	wf:type.workflow.feedback.image.format Requested image format. If omitted, the image is delivered in the original format.
size?	xs:string Requested image size in format <Width>x<Height> (e.g. 1000x800). If omitted, the image is delivered in the original image size.
preserveAspectRatio?	xs:boolean Default: true Controls whether the aspect ratio of the image is preserved on scaling.
profile	xs:string Logging profile on which the XPath evaluation is based.

Attribute name	Description
path?	<p>xs:string</p> <p>XPath 1.0 expression to limit the returned XML data to matching nodes. If empty or omitted, the complete XML data is delivered.</p>
condition?	<p>xs:IDREF</p> <p>References a condition. Controls whether the feedback element is delivered. MUST be considered fulfilled if empty or attribute was omitted.</p>
onRequestOnly?	<p>xs:boolean</p> <p>Default: false</p> <p>Controls whether the feedback element is available as part of the general feedback loop via <code>getWorkflowFeedback</code> or only upon explicit request via <code>getWorkflowFeedbackById</code>.</p>
innerTextOnly?	<p>xs:boolean</p> <p>Default: false</p> <p>Controls whether only the inner text of a selected node is delivered as <code>stringFeedback</code>. If yes, path MUST NOT be empty.</p>

Table 6.93 type.workflow.feedback.xml - attributes

6.5.19.33.2. Elements

None.

6.5.19.33.3. XSD Definition

```
<xs:complexType name="type.workflow.feedback.xml">
  <xs:attribute name="id" type="xs:ID" use="required">
  <xs:attribute name="from" type="xs:IDREF" use="required" />
  <xs:attribute name="format" type="wf:type.workflow.feedback.image.format" />
  <xs:attribute name="size" type="xs:string" />
  <xs:attribute name="preserveAspectRatio" type="xs:string" />
  <xs:attribute name="profile" type="xs:string" />
  <xs:attribute name="path" type="xs:string" />
  <xs:attribute name="condition" type="xs:IDREF" />
  <xs:attribute name="onRequestOnly" type="xs:boolean" default="false" />
  <xs:attribute name="innerTextOnly" type="xs:boolean" default="false" />
</xs:complexType>
```

6.5.19.34. type.workflow.feedback.image.format

Denotes the binary data format of image feedback. Derived from `xs:string`.

6.5.19.34.1. Values

The `type.workflow.feedback.image.format` values are given in ▶Table 6.94.

Value	Description
bmp	Bitmap
jpeg	JPEG
jpeg2000	JPEG 2000
png	Portable Network Graphics (Portable Network Graphics (PNG))
wsq	Wavelet Scalar Quantization (WSQ)
iso19794_4	Finger image data according to ISO 19794-4

Value	Description
iso19794_5	Face image data according to ISO 19794-5

Table 6.94 type.workflow.feedback.image.format - values

6.5.19.34.2. Elements

None.

6.5.19.34.3. XSD Definition

```
<xs:simpleType name="type.workflow.feedback.image.format">
  <xs:restriction base="xs:string">
    <xs:enumeration value="bmp" />
    <xs:enumeration value="jpeg" />
    <xs:enumeration value="jpeg2000" />
    <xs:enumeration value="png" />
    <xs:enumeration value="wsq" />
    <xs:enumeration value="iso19794_4" />
    <xs:enumeration value="iso19794_5" />
  </xs:restriction>
</xs:simpleType>
```

6.5.19.35. type.workflow.dependencies

List of dependencies between elements of the workflow. The dependencies always refer to elements from the reading sequence or the feedback definition. Cyclic dependencies MUST be detected in addWorkflow and MUST prevent the workflow from loading.

6.5.19.35.1. Attributes

None.

6.5.19.35.2. Elements

The type.workflow.dependencies elements are given in ▶ Table 6.95.

Element name	Description
FinishToStart*	wf:type.workflow.dependencies.finishtostart A dependency where an elements has to wait for another element.

Table 6.95 type.workflow.dependencies - elements

6.5.19.35.3. XSD Definition

```
<xs:complexType name="type.workflow.dependencies">
  <xs:choice minOccurs="0" maxOccurs="unbounded">
    <xs:element name="FinishToStart"
      type="wf:type.workflow.dependencies.finishtostart">
    </xs:choice>
</xs:complexType>
```

6.5.19.36. type.workflow.dependencies.finishtostart

Declares a sequential dependency. The processing of the first element MUST be finished before the processing of the dependent element is started.

6.5.19.36.1. Attributes

The type.workflow.dependencies.finishtostart attributes are given in ▶ Table 6.96.

Attribute name	Description
id1*	xs:IDREF Reference to a data or feedback element. Processing of this element MUST be finished before processing of id2 starts.
id2*	xs:IDREF Reference to a data or feedback element. Processing of this element MUST NOT be started before processing of id1 finishes.
condition?	xs:IDREF Reference to a condition. Controls whether this dependency is applicable. MUST be considered fulfilled if empty or attribute was omitted.

Table 6.96 type.workflow.dependencies.finishtostart - attributes

6.5.19.36.2. Elements

None.

6.5.19.36.3. XSD Definition

```
<xs:complexType name="type.workflow.dependencies.finishtostart">
  <xs:attribute name="id1" type="xs:IDREF" use="required">
  <xs:attribute name="id2" type="xs:IDREF" use="required">
  <xs:attribute name="condition" type="xs:IDREF" >
</xs:complexType>
```

6.5.19.37. type.workflow.extension

Allows access to implementation-specific workflow extensions. The server MUST consider known extensions during validation of the workflow definition. The server MUST reject unknown extensions with an appropriate WorkflowParserError message.

6.5.19.37.1. Attributes

None.

6.5.19.37.2. Elements

MAY contain a single element of any type from a different namespace than <http://trdoccheck.bsi.bund.de/hldc/workflow/2> [http://trdoccheck.bsi.bund.de/hldc/workflow/2].

6.5.19.37.3. XSD Definition

```
<xs:complexType name="type.workflow.extension" >
  <xs:sequence>
    <xs:any namespace="##other" minOccurs="0"
      processContents="lax" />
  </xs:sequence>
</xs:complexType>
```

7. Workflow feedback schema

Feedback requested by elements of type `type.workflow.feedback.xml` in the workflow definition is provided as an XML document in the `stringFeedback` element of `h1dc:WorkflowFeedback`.

The XML schema for the XML feedback is located in the file `fb_v2.xsd` and is based on XSD 1.0.

7.1. Feedback document

XML document that contains feedback requested by elements of type `type.workflow.feedback.xml` in the workflow definition.

7.1.1. Root element

Element name	Description
Feedback	<code>wf:type.feedback</code> Root element of the feedback document.

Table 7.1.

7.1.2. XSD Definition

```
<xs:element name="Feedback" type="wf:type.feedback" />
```

7.2. type.feedback

Root element of the XML feedback document. If an XPath expression was specified in the workflow definition of the relevant feedback request, the result is always returned in `XPathResult`. In all other cases, the feedback is returned in the corresponding element.

7.2.1. Attributes

Attribute name	Description
<code>schemaVersion</code>	<code>xs:decimal</code> Feedback schema version. MUST be "1".

Table 7.2.

7.2.2. Elements

`type.feedback` MUST contain only one of the following elements.

Element name	Description
<code>DG1Data</code>	<code>wf:type.feedback.dg1</code> Data from data group 1.
<code>DG2Data</code>	<code>wf:type.feedback.dg2</code> Data from data group 2.

Element name	Description
DG3Data	<p><code>wf:type.feedback.dg3</code></p> <p>Data from data group 3.</p>
DG4Data	<p><code>wf:type.feedback.dg4</code></p> <p>Data from data group 4.</p>
DG11Data	<p><code>wf:type.feedback.dg11</code></p> <p>Data from data group 11.</p>
DG12Data	<p><code>wf:type.feedback.dg12</code></p> <p>Data from data group 12.</p>
EIDDG17Data	<p><code>wf:type.feedback.eid.placeofresidence</code></p> <p>Data from eID data group 17.</p>
DefectInfo	<p><code>wf:type.feedback.defects</code></p> <p>Defect information.</p>
OpticalMRZData	<p><code>wf:type.feedback.optmrz</code></p> <p>Data from the optical MRZ.</p>
SealVisa	<p><code>wf:type.feedback.seal.visa</code></p> <p>Data from the digital seal on a visa.</p>
SealEmergencyTravelDocument	<p><code>wf:type.feedback.seal.emergencytraveldocument</code></p> <p>Data from the digital seal on an emergency travel document.</p>
SealArrivalAttestationDocument	<p><code>wf:type.feedback.seal.arrivalattestationdocument</code></p> <p>Data from the digital seal of an arrival attestation document.</p>
SealResidencePermit	<p><code>wf:type.feedback.seal.residencepermit</code></p> <p>Data from the digital seal on a residence permit.</p>
SealResidencePermitSupplementarySheet	<p><code>wf:type.feedback.seal.residencepermitsupplementarysheet</code></p> <p>Data from the digital seal on a residence permit supplementay sheet.</p>
SealAddressStickerGermanIdentityCard	<p><code>wf:type.feedback.seal.addressstickergermanidentitycard</code></p> <p>Data from the digital seal on a german identity card address sticker.</p>
SealUnknown	<p><code>wf:type.feedback.seal.unknown</code></p> <p>Data from the digital seal of an unknown type.</p>
ElectronicCheckResult	<p><code>wf:type.feedback.checkresult</code></p> <p>Result of an electronic check. Formatted according to the relevant document check namespace defined in [BSI TR-03135-1], e.g.</p> <p>☞ http://trdoccheck.bsi.bund.de/dce/4.</p>
OpticalCheckResult	<p><code>wf:type.feedback.checkresult</code></p> <p>Result of an optical check. Formatted according to the relevant document check namespace defined in [BSI TR-03135-1], e.g.</p> <p>☞ http://trdoccheck.bsi.bund.de/dco/4.</p>
SealCheckResult	<p><code>wf:type.feedback.checkresult</code></p> <p>Result of a seal check. Formatted according to the relevant document check namespace defined in [BSI TR-03135-1], e.g.</p> <p>☞ http://trdoccheck.bsi.bund.de/dcs/1.</p>

Element name	Description
CombinedCheckResult	<p>wf:type.feedback.checkresult</p> <p>Result of a combined check. Formatted according to the relevant document check namespace defined in [BSI TR-03135-1], e.g.</p> <p>☞ http://trdoccheck.bsi.bund.de/dcc/4.</p>
AggregatedDocumentCheckResult	<p>wf:type.feedback.checkresult</p> <p>Result of an aggregation of document check results.</p>
XPathResult	<p>wf:type.feedback.xpathresult</p> <p>Subset of XML nodes of the original feedback (datagroup or check result).</p> <p>Used if an XPath expression is provided in the path element of type.workflow.feedback.xml.</p>
ExtensionFeedback	<p>wf:type.feedback.extended</p> <p>Implementation-specific feedback.</p>

Table 7.3.

7.2.3. XSD Definition

```

<xs:complexType name="type.feedback">
  <xs:choice>
    <xs:element name="DG1Data" type="wf:type.feedback.dg1" />
    <xs:element name="DG2Data" type="wf:type.feedback.dg2" />
    <xs:element name="DG3Data" type="wf:type.feedback.dg3" />
    <xs:element name="DG4Data" type="wf:type.feedback.dg4" />
    <xs:element name="DG11Data" type="wf:type.feedback.dg11" />
    <xs:element name="DG12Data" type="wf:type.feedback.dg12" />
    <xs:element name="EIDDG17Data" type="wf:type.feedback.eid.placeofresidence" />
    <xs:element name="DefectInfo" type="wf:type.feedback.defects" />
    <xs:element name="OpticalMRZData" type="wf:type.feedback.optmrz" />
    <xs:element name="SealVisa" type="wf:type.feedback.seal.visa" />
    <xs:element name="SealEmergencyTravelDocument"
      type="wf:type.feedback.seal.emergencytraveldocument" />
    <xs:element name="SealArrivalAttestationDocument"
      type="wf:type.feedback.seal.arrivalattestationdocument" />
    <xs:element name="SealSocialInsuranceCard" type="wf:type.feedback.seal.socialinsurancecard" />
    <xs:element name="SealResidencePermit" type="wf:type.feedback.seal.residencepermit" />
    <xs:element name="SealResidencePermitSupplementarySheet"
      type="wf:type.feedback.seal.residencepermitsupplementarysheet" />
    <xs:element name="SealAddressStickerGermanIdentityCard"
      type="wf:type.feedback.seal.addressstickergermanidentitycard" />
    <xs:element name="SealUnknown" type="wf:type.feedback.seal.unknown" />
    <xs:element name="ElectronicCheckResult" type="wf:type.feedback.checkresult" />
    <xs:element name="OpticalCheckResult" type="wf:type.feedback.checkresult" />
    <xs:element name="SealCheckResult" type="wf:type.feedback.checkresult" />
    <xs:element name="CombinedCheckResult" type="wf:type.feedback.checkresult" />
    <xs:element name="CrossDocumentCheckResult" type="wf:type.feedback.checkresult" />
    <xs:element name="AggregatedDocumentCheckResult" type="wf:type.feedback.checkresult" />
    <xs:element name="XPathResult" type="wf:type.feedback.xpathresult" />
    <xs:element name="ExtensionFeedback" type="wf:type.feedback.extended" />
  </xs:choice>
  <xs:attribute name="schemaVersion" type="xs:decimal" use="required" />
</xs:complexType>

```

7.3. type.feedback.dg1

Contains the data from data group 1.

7.3.1. Attributes

None

7.3.2. Elements

Element name	Description
DocumentType	xs:string Type of the document.
Issuer	xs:string Issuer of the document.
GivenName	xs:string Given name of the document holder.
Surname	xs:string Surname of the document holder.
DocumentNumber	xs:string Document number (without check digit).
Nationality	xs:string Nationality of the document holder.
DateOfBirth	xs:string Date of birth of the document holder, encoded in the same way as in the MRZ (YYMMDD).
Sex	xs:string Sex of the document holder.
ExpiryDate	xs:string Expiry date of the document.
OptionalData	xs:string Optional data stored in the MRZ.
ChkDigitDocumentNumber	xs:string Check digit of the document number.
ChkDigitDateOfBirth	xs:string Check digit of the date of birth..
ChkDigitExpiryDate	xs:string Check digit of the expiry date..
ChkDigitOptionalData	xs:string Check digit for optional data..
ChkDigitComposite	xs:string Check digit of the MRZ.
IsoDateOfBirth?	type.feedback.string.date The full date of birth.
IsoExpiryDate?	type.feedback.string.date The full date of expiry.

Table 7.4.

7.3.3. XSD Definition

```
<xs:complexType name="type.feedback.dg1">
  <xs:sequence>
    <xs:element name="DocumentType" type="xs:string"/>
    <xs:element name="Issuer" type="xs:string"/>
    <xs:element name="GivenName" type="xs:string"/>
    <xs:element name="Surname" type="xs:string"/>
    <xs:element name="DocumentNumber" type="xs:string"/>
    <xs:element name="Nationality" type="xs:string"/>
    <xs:element name="DateOfBirth" type="xs:string"/>
    <xs:element name="Sex" type="xs:string"/>
    <xs:element name="ExpiryDate" type="xs:string"/>
    <xs:element name="OptionalData" type="xs:string"/>
    <xs:element name="ChkDgtDocumentNumber" type="xs:string"/>
    <xs:element name="ChkDgtDateOfBirth" type="xs:string"/>
    <xs:element name="ChkDgtExpiryDate" type="xs:string"/>
    <xs:element name="ChkDgtOptionalData" type="xs:string"/>
    <xs:element name="ChkDgtComposite" type="xs:string"/>
    <xs:element name="IsoDateOfBirth" type="wf:type.feedback.string.date" minOccurs="0"/>
    <xs:element name="IsoDateOfExpiry" type="wf:type.feedback.string.date" minOccurs="0"/>
  </xs:sequence>
</xs:complexType>
```

7.4. type.feedback.dg2

Contains a list of facial image templates.

7.4.1. Attributes

None

7.4.2. Elements

Element name	Description
Template*	wf:type.feedback.dg2.template A facial image template.

Table 7.5.

7.4.3. XSD Definition

```
<xs:complexType name="type.feedback.dg2">
  <xs:sequence>
    <xs:element name="Template" minOccurs="0" maxOccurs="unbounded"
      type="wf:type.feedback.dg2.template" />
  </xs:sequence>
</xs:complexType>
```

7.5. type.feedback.dg2.template

Contains Base64-encoded image data of a single face. Derived from xs:base64binary.

7.5.1. Attributes

None

7.5.2. Elements

Element name	Description
Image*	wf:type.feedback.dg2.image A facial image template.

Table 7.6.

7.5.3. XSD Definition

```
<xs:complexType name="type.feedback.dg2">
  <xs:sequence>
    <xs:element name="Template" minOccurs="0" maxOccurs="unbounded"
      type="wf:type.feedback.dg2.template" />
  </xs:sequence>
</xs:complexType>
```

7.6. type.feedback.dg2.image

Contains Base64-encoded image data of a single face. Derived from xs:base64binary.

7.6.1. Attributes

Attribute name	Description
width	xs:int The image width.
height	xs:int The image height.
imageType	xs:unsignedByte The type of the face image according to ISO 19794-5. Can contain the following values: <ul style="list-style-type: none"> • 0x00 – Basic • 0x01 – Full Frontal • 0x02 – Token Frontal • 0x03–0xFF – Reserved / Not used in the scope of this interface

Table 7.7.

7.6.2. Elements

None

7.6.3. XSD Definition

```
<xs:complexType name="type.feedback.dg2.image">
  <xs:simpleContent>
    <xs:extension base="xs:base64Binary">
      <xs:attribute name="width" type="xs:int" use="required" />
      <xs:attribute name="height" type="xs:int" use="required" />
      <xs:attribute name="imageType" type="xs:unsignedByte" use="required" />
    </xs:extension>
  </xs:simpleContent>
</xs:complexType>
```


7.7. type.feedback.dg3

Contains a list of fingerprint templates.

7.7.1. Attributes

None.

7.7.2. Elements

Element name	Description
Template*	wf:type.feedback.dg3.template A fingerprint template.

Table 7.8.

7.7.3. XSD Definition

```
<xs:complexType name="type.feedback.dg3">
  <xs:sequence>
    <xs:element name="Template" minOccurs="0" maxOccurs="unbounded"
      type="wf:type.feedback.dg3.template" />
  </xs:sequence>
</xs:complexType>
```

7.8. type.feedback.dg3.template

Contains a list of fingerprint images.

7.8.1. Attributes

None.

7.8.2. Elements

Element name	Description
Image*	wf:type.feedback.dg3.image A fingerprint image.

Table 7.9.

7.8.3. XSD Definition

```
<xs:complexType name="type.feedback.dg3.template">
  <xs:sequence>
    <xs:element name="Image" minOccurs="0" maxOccurs="unbounded"
      type="wf:type.feedback.dg3.image" />
  </xs:sequence>
</xs:complexType>
```

7.9. type.feedback.dg3.image

Contains Base64-encoded image data of a single fingerprint according to ISO 19794-4. Derived from xs:base64binary.

7.9.1. Attributes

Attribute name	Description
width	xs:int The image width.
height	xs:int The image height.
fingerPos	type.feedback.dg3.image.fingerpos Finger position code according to ISO 19794-4.

Table 7.10.

7.9.2. Elements

None.

7.9.3. XSD Definition

```
<xs:complexType name="type.feedback.dg3.image">
  <xs:simpleContent>
    <xs:extension base="xs:base64Binary">
      <xs:attribute name="width" type="xs:int" use="required" />
      <xs:attribute name="height" type="xs:int" use="required" />
      <xs:attribute name="fingerPos" type="xs:int" use="required" />
    </xs:extension>
  </xs:simpleContent>
</xs:complexType>
```

7.10. type.feedback.dg3.image.fingerpos

Represents finger position codes according to ISO 19794-4 (Table 6).

7.10.1. Values

Value	Description
0	Unknown
1	Right thumb
2	Right index finger
3	Right middle finger
4	Right ring finger
5	Right little finger
6	Left thumb
7	Left index finger
8	Left middle finger
9	Left ring finger
10	Left little finger
13	Plain right four fingers
14	Plain left four fingers

Value	Description
15	Plain thumbs

Table 7.11.

7.10.2. XSD Definition

```
<xs:simpleType name="type.feedback.dg3.image.fingerpos">
  <xs:union>
    <xs:simpleType>
      <xs:restriction base="xs:unsignedByte">
        <xs:minInclusive value="0" />
        <xs:maxInclusive value="10" />
      </xs:restriction>
    </xs:simpleType>
    <xs:simpleType>
      <xs:restriction base="xs:unsignedByte">
        <xs:minInclusive value="13" />
        <xs:maxInclusive value="15" />
      </xs:restriction>
    </xs:simpleType>
  </xs:union>
</xs:simpleType>
```

7.11. type.feedback.dg4

Contains a list of iris templates.

7.11.1. Attributes

None.

7.11.2. Elements

Element name	Description
Template*	wf:type.feedback.dg4.template An iris template.

Table 7.12.

7.11.3. XSD Definition

```
<xs:complexType name="type.feedback.dg4">
  <xs:sequence>
    <xs:element name="Template" minOccurs="0" maxOccurs="unbounded"
      type="wf:type.feedback.dg4.template" />
  </xs:sequence>
</xs:complexType>
```

7.12. type.feedback.dg4.template

Contains a list of iris images.

7.12.1. Attributes

None.

7.12.2. Elements

Element name	Description
Image*	wf:type.feedback.dg4.image An iris image.

Table 7.13.

7.12.3. XSD Definition

```
<xs:complexType name="type.feedback.dg4.template">
  <xs:sequence>
    <xs:element name="Image" minOccurs="0" maxOccurs="unbounded"
      type="wf:type.feedback.dg4.image" />
  </xs:sequence>
</xs:complexType>
```

7.13. type.feedback.dg4.image

Contains Base64-encoded image data of a single iris. Derived from xs:base64binary.

7.13.1. Attributes

Attribute name	Description
width	xs:int The image width.
height	xs:int The image height.

Table 7.14.

7.13.2. Elements

None.

7.13.3. XSD Definition

```
<xs:complexType name="type.feedback.dg4.image">
  <xs:simpleContent>
    <xs:extension base="xs:base64Binary">
      <xs:attribute name="width" type="xs:int" use="required">
      <xs:attribute name="height" type="xs:int" use="required">
    </xs:extension>
  </xs:simpleContent>
</xs:complexType>
```

7.14. type.feedback.dg11

Contains the XML feedback for datagroup 11.

7.14.1. Attributes

None.

7.14.2. Elements

Element name	Description
Name	wf:type.feedback.name The full name of the person.
PersonalNumber	xs:string Personal number.
FullDateOfBirth	xs:string The full date of birth including the century in format DD.MM.YYYY.
PlaceOfBirth	xs:string The place of birth.
PermanentAddress	xs:string The permanent address.
TelephoneNumber	xs:string The telephone number.
Profession	xs:string The profession.
Title	xs:string The title of the person..
PersonalSummary	xs:string Personal summary.
TDNumbers	xs:string Additional travel document numbers.
CustodyInformation	xs:string Custody information.
OtherNames	wf:type.feedback.namelist List of additional names..
ProofOfCitizenship?	xs:base64Binary Image of the proof of citizenship.

Table 7.15.

7.14.3. XSD Definition

```
<xs:complexType name="type.feedback.dg11">
  <xs:sequence>
    <xs:element name="Name" type="wf:type.feedback.name"/>
    <xs:element name="PersonalNumber" type="xs:string"/>
    <xs:element name="FullDateOfBirth" type="xs:string"/>
    <xs:element name="PlaceOfBirth" type="xs:string"/>
    <xs:element name="PermanentAddress" type="xs:string"/>
    <xs:element name="TelephoneNumber" type="xs:string"/>
    <xs:element name="Profession" type="xs:string"/>
    <xs:element name="Title" type="xs:string"/>
    <xs:element name="PersonalSummary" type="xs:string"/>
    <xs:element name="TDNumbers" type="xs:string"/>
    <xs:element name="CustodyInformation" type="xs:string"/>
    <xs:element name="OtherNames" type="wf:type.feedback.namelist"/>
    <xs:element name="ProofOfCitizenship" minOccurs="0" type="xs:base64Binary"/>
  </xs:sequence>
</xs:complexType>
```

```
</xs:sequence>
</xs:complexType>
```

7.15. type.feedback.dg12

Contains the XML feedback for data group 12.

7.15.1. Attributes

None.

7.15.2. Elements

Element name	Description
IssuingAuthority	xs:string The issuing authority.
DateOfIssue	xs:string The date of issue in format DD.MM.YYYY.
Endorsements	xs:string Endorsements.
TaxExitRequirements	xs:string The tax and exit requirements
PersTime	xs:string Time of personalization in format DD.MM.YYYY HH:MM:SS.
SnrPersSystem	xs:string The serial number of the personalization system.
OtherPeople	wf:type.feedback.namelist List of other people.
FrontImage?	xs:base64Binary Front image of the document.
RearImage?	xs:base64Binary Rear image of the document.

Table 7.16.

7.15.3. XSD Definition

```
<<xs:complexType name="type.feedback.dg12">
  <xs:sequence>
    <xs:element name="IssuingAuthority" type="xs:string"/>
    <xs:element name="DateOfIssue" type="xs:string"/>
    <xs:element name="Endorsements" type="xs:string"/>
    <xs:element name="TaxExitRequirements" type="xs:string"/>
    <xs:element name="PersTime" type="xs:string"/>
    <xs:element name="SnrPersSystem" type="xs:string"/>
    <xs:element name="OtherPeople" type="wf:type.feedback.namelist"/>
    <xs:element name="FrontImage" minOccurs="0" type="xs:base64Binary"/>
    <xs:element name="RearImage" minOccurs="0" type="xs:base64Binary"/>
  </xs:sequence>
</xs:complexType>
```

7.16. type.feedback.optmrz

Contains optical MRZ data.

7.16.1. Attributes

None.

7.16.2. Elements

Element name	Description
DocumentType	xs:string Type of the document.
Issuer	xs:string Issuer of the travel document..
GivenName	xs:string Given name of the document holder.
Surname	xs:string Surname of the document holder.
DocumentNumber	xs:string Document number (without check digit).
Nationality	xs:string Nationality of the document holder.
DateOfBirth	xs:string Date of birth of the document holder, encoded in the same way as in the MRZ (YYMMDD).
Sex	xs:string Sex of the document holder.
ExpiryDate	xs:string Expiry date of the document.
OptionalData	xs:string Optional data stored in the MRZ.
ChkDigitDocumentNumber	xs:string Check digit of the document number.
ChkDigitDateOfBirth	xs:string Check digit of the date of birth.
ChkDigitExpiryDate	xs:string Check digit of the expiry date.
ChkDigitOptionalData	xs:string Check digit for optional data.
ChkDigitComposite	xs:string Check digit of the MRZ.
IsoDateOfBirth?	xs:string The full date of birth.

Element name	Description
IsoExpiryDate?	xs:string The full date of expiry.

Table 7.17.

7.16.3. XSD Definition

```
<xs:complexType name="type.feedback.optmrz">
  <xs:sequence>
    <xs:element name="DocumentType" type="xs:string"/>
    <xs:element name="Issuer" type="xs:string"/>
    <xs:element name="GivenName" type="xs:string"/>
    <xs:element name="Surname" type="xs:string"/>
    <xs:element name="DocumentNumber" type="xs:string"/>
    <xs:element name="Nationality" type="xs:string"/>
    <xs:element name="DateOfBirth" type="xs:string"/>
    <xs:element name="Sex" type="xs:string"/>
    <xs:element name="ExpiryDate" type="xs:string"/>
    <xs:element name="OptionalData" type="xs:string"/>
    <xs:element name="ChkDgtDocumentNumber" type="xs:string"/>
    <xs:element name="ChkDgtDateOfBirth" type="xs:string"/>
    <xs:element name="ChkDgtExpiryDate" type="xs:string"/>
    <xs:element name="ChkDgtOptionalData" type="xs:string"/>
    <xs:element name="ChkDgtComposite" type="xs:string"/>
    <xs:element name="IsoDateOfBirth" type="wf:type.feedback.string.date" minOccurs="0"/>
    <xs:element name="IsoDateOfExpiry" type="wf:type.feedback.string.date" minOccurs="0"/>
  </xs:sequence>
</xs:complexType>
```

7.17. type.feedback.eid.placeofresidence

Type for eID data group 17 place of residence.

7.17.1. Attributes

None.

7.17.2. Elements

Element name	Description
StructuredPlace	wf:type.feedback.eid.placeofresidence .structuredplace Contains a structured representation of the place of residence.
FreeTextPlace	xs:string Contains a free text representation of the place.
NoPlaceInfo	xs:string Indicates that no place of residence is present.

Table 7.18.

7.17.3. XSD Definition

```
<xs:complexType name="type.feedback.eid.placeofresidence">
  <xs:choice minOccurs="0" maxOccurs="unbounded">
    <xs:element name="StructuredPlace"
      type="wf:type.feedback.eid.placeofresidence.structuredplace" />
    <xs:element name="FreeTextPlace" type="xs:string" />
    <xs:element name="NoPlaceInfo" />
  </xs:choice>
</xs:complexType>
```



```
</xs:choice>
</xs:complexType>
```

7.18. type.feedback.eid.placeofresidence.structuredplace

Type for structured place of residence information.

7.18.1. Attributes

None.

7.18.2. Elements

Element name	Description
City	xs:string Contains a structured representation of the place of residence.
Country	xs:string Contains the country of the structured place.
Street?	xs:string Contains the street of the structured place.
State?	xs:string Contains the state of the structured place.
ZipCode?	xs:string Contains the zip code of the structured place.

Table 7.19 .

7.18.3. XSD Definition

```
<xs:complexType name="type.feedback.eid.placeofresidence.structuredplace">
  <xs:sequence>
    <xs:element name="City" type="xs:string" />
    <xs:element name="Country" type="xs:string" />
    <xs:element name="Street" type="xs:string" minOccurs="0" />
    <xs:element name="State" type="xs:string" minOccurs="0" />
    <xs:element name="ZipCode" type="xs:string" minOccurs="0" />
  </xs:sequence>
</xs:complexType>
```

7.19. type.feedback.defects

Contains a list of known defects for the current document.

7.19.1. Attributes

None.

7.19.2. Elements

Element name	Description
Defect*	wf:type.feedback.defects.defect A known defect for the current document.

Table 7.20 .

7.19.3. XSD Definition

```
<xs:complexType name="type.feedback.defects">
  <xs:sequence>
    <xs:element name="Defect" minOccurs="0" maxOccurs="unbounded"
      type="wf:type.feedback.defects.defect" />
  </xs:sequence>
</xs:complexType>
```

7.20. type.feedback.oid

Description of an Oid (ASN.1 object identifier).

7.20.1. Format restrictions

The content MUST match the specified regular expression pattern, for example "1.2.3.4".

7.20.2. XSD Definition

```
<xs:complexType name="type.feedback.oid">
  <xs:restriction base="xs:string">
    <xs:pattern value="(\d+\.)+\d+"/>
  </xs:restriction>
</xs:complexType>
```

7.21. type.feedback.defects.defect

Description of a defect.

7.21.1. Attributes

None.

7.21.2. Elements

Element name	Description
Oid	wf:type.feedback.oid The defect OID according to TR-03129-2.
ParameterInfo?	xs:string Additional information about the defect which must be interpreted in the context of the defect type.

Table 7.21 .

7.21.3. XSD Definition

```
<xs:complexType name="type.feedback.defects.defect">
  <xs:sequence>
    <xs:element name="Oid"
      type="wf:type.feedback.oid" />
    <xs:element name="ParameterInfo" minOccurs="0"
      type="xs:string" />
  </xs:sequence>
</xs:complexType>
```

7.22. type.feedbacks.name

Detailed name information.

7.22.1. Attributes

None.

7.22.2. Elements

Element name	Description
FullName	xs:string The full name.
GivenName	xs:string The given name.
Surname	xs:string The surname.

Table 7.22 .

7.22.3. XSD Definition

```
<xs:complexType name="type.feedback.name">
  <xs:sequence>
    <xs:element name="FullName" type="xs:string"/>
    <xs:element name="GivenName" type="xs:string"/>
    <xs:element name="Surname" type="xs:string"/>
  </xs:sequence>
</xs:complexType>
```

7.23. type.feedback.namelist

List of names.

7.23.1. Attributes

None.

7.23.2. Elements

Element name	Description
Name*	wf:type.feedback.name The full name.

Table 7.23 .

7.23.3. XSD Definition

```
<xs:complexType name="type.feedback.namelist">
  <xs:sequence>
    <xs:element name="Name" minOccurs="0" maxOccurs="unbounded"
      type="wf:type.feedback.name" />
  </xs:sequence>
</xs:complexType>
```

7.24. type.feedback.checkresult

Contains the results of an electronic, optical or combined check. Results are formatted according to the relevant document check schemas defined in [BSI TR-03135-1], e.g. document_check_electronic_v2.xsd.

7.24.1. Attributes

None.

7.24.2. Elements

MAY contain one element of any type from a different namespace than <http://trdoccheck.bsi.bund.de/hl-dc/workflow/1> [http://trdoccheck.bsi.bund.de/hl-dc/workflow/1], which is the root element of the relevant document check schema.

7.24.3. XSD Definition

```
<xs:complexType name="type.feedback.extended">
  <xs:sequence>
    <xs:any namespace="##other" minOccurs="0"
      processContents="lax" />
  </xs:sequence>
</xs:complexType>
```

7.25. type.feedback.xpathresult

Contains a subset of XML nodes of the original feedback (datagroup or check result) if an XPath expression is provided in the path element of type.workflow.feedback.xml.

7.25.1. Attributes

XPath-based feedback MAY contain any number of any attributes.

7.25.2. Elements

XPath-based feedback MAY contain any number of any elements.

7.25.3. XSD Definition

```
<xs:complexType name="type.feedback.xpathresult">
  <xs:sequence>
    <xs:any minOccurs="0" maxOccurs="unbounded" processContents="lax" />
  </xs:sequence>
  <xs:anyAttribute processContents="lax" />
</complexType>
```

7.26. type.feedback.seal.visa

Contains the data of a digital seal on a visa.

7.26.1. Attributes

None.

7.26.2. Elements

Element name	Description
UnfoldedMRZ	wf:type.feedback.mrz.unfolded.shortened Truncated MRZ contained in the digital seal.
DurationOfStay	wf:type.feedback.seal.visa.durationofstay Duration of stay.
PassportNumber	wf:type.feedback.seal.passportnumber Number of the passport corresponding to the visa.
VisaType	xs:base64Binary Visa type encoded in the seal
NumberOfEntries	xs:unsignedByte Number of entries permitted using the visa document.

Table 7.24.

7.26.3. XSD Definition

```
<xs:complexType name="type.feedback.seal.visa">
  <xs:sequence>
    <xs:element name="UnfoldedMRZ" type="wf:type.feedback.mrz.unfolded.shortened" />
    <xs:element name="DurationOfStay" type="wf:type.feedback.seal.visa.durationofstay" />
    <xs:element name="PassportNumber" type="wf:type.feedback.seal.passportnumber" />
    <xs:element name="VisaType" type="xs:base64Binary" minOccurs="0"/>
    <xs:element name="NumberOfEntries" type="xs:unsignedByte" minOccurs="0"/>
  </xs:sequence>
</xs:complexType>
```

7.27. type.feedback.seal.visa.durationofstay

Contains the duration permitted to stay according to the visa document.

7.27.1. Attributes

None.

7.27.2. Elements

Element name	Description
NumberOfDays	xs:unsignedByte Amount of days permitted to stay.
NumberOfMonths	xs:unsignedByte Amount of months permitted to stay.
NumberOfYears	xs:unsignedByte Amount of years permitted to stay.

Table 7.25.

7.27.3. XSD Definition

```
<xs:complexType name="type.feedback.seal.visa.durationofstay">
  <xs:sequence>
```

```
<xs:element name="NumberOfDays" type="xs:unsignedByte" />
<xs:element name="NumberOfMonths" type="xs:unsignedByte" />
<xs:element name="NumberOfYears" type="xs:unsignedByte" />
</xs:sequence>
</xs:complexType>
```

7.28. type.feedback.seal.emergencytraveldocument

Contains the data of a digital seal on an emergency travel document.

7.28.1. Attributes

None.

7.28.2. Elements

Element name	Description
AdditionalFeatures	xs:string Features defined by the issuer.
UnfoldedMRZ	wf:type.feedback.mrz.unfolded Content of the MRZ contained in the emergency travel document.

Table 7.26.

7.28.3. XSD Definition

```
<xs:complexType name="type.feedback.seal.emergencytraveldocument">
  <xs:sequence>
    <xs:element name="AdditionalFeatures" type="xs:string" />
    <xs:element name="UnfoldedMRZ" type="wf:type.feedback.mrz.unfolded" />
  </xs:sequence>
</xs:complexType>
```

7.29. type.feedback.seal.arrivalattestationdocument

Contains the data of a digital seal on an arrival attestation document.

7.29.1. Attributes

None.

7.29.2. Elements

Element name	Description
AzrNumber	wf:type.feedback.seal.arrivalattestationdocumentazrnumber Number of the AZR.
UnfoldedMRZ	wf:type.feedback.mrz.unfolded Content of the MRZ contained in the arrival attestation document.

Table 7.27.

7.29.3. XSD Definition

```
<xs:complexType name="type.feedback.seal.arrivalattestationdocument">
  <xs:sequence>
```

```

<xs:element name="AzrNumber" type="wf:type.feedback.seal.arrivalattestationdocumentazrnumber"/
>
<xs:element name="UnfoldedMRZ" type="wf:type.feedback.mrz.unfolded"/>
</xs:sequence>
</xs:complexType>

```

7.30. type.feedback.seal.socialinsurancecard

Contains the data of a digital seal on a social insurance card.

7.30.1. Attribute

None.

7.30.2. Elements

Element name	Description
SocialInsuranceNumber	wf:type.feedback.seal.socialinsurancecard.socialinsuranc cnumber Number of the social insurance.
Surname	wf:type.feedback.seal.socialinsurancecard.surname Surname contained in the document.
Firstname	wf:type.feedback.seal.socialinsurancecard.firstname Firstname contained in the document.
NameAtBirth	wf:type.feedback.seal.socialinsurancecard.nameatbirth Name at birth of the document holder.

Table 7.28.

7.30.3. XSD Definition

```

<xs:complexType name="type.feedback.seal.socialinsurancecard">
  <xs:sequence>
    <xs:element name="SocialInsuranceNumber"
      type="wf:type.feedback.seal.socialinsurancecard.socialinsuranc  
number"/>
    <xs:element name="Surname" type="wf:type.feedback.seal.socialinsurancecard.surname"/>
    <xs:element name="Firstname" type="wf:type.feedback.seal.socialinsurancecard.firstname"/>
    <xs:element name="NameAtBirth"
      type="wf:type.feedback.seal.socialinsurancecard.nameatbirth" minOccurs="0"/>
  </xs:sequence>
</xs:complexType>

```

7.31. type.feedback.seal.residencepermit

Contains the data of a digital seal on a residence permit.

7.31.1. Attribute

None.

7.31.2. Elements

Element name	Description
PassportNumber	wf:type.feedback.seal.passportnumber Number of the corresponding passport.

Element name	Description
UnfoldedMRZ	wf:type.feedback.mrz.unfolded MRZ contained in the document.

Table 7.29.

7.31.3. XSD Definition

```
<xs:complexType name="type.feedback.seal.residencepermit">
  <xs:sequence>
    <xs:element name="PassportNumber" type="wf:type.feedback.seal.passportnumber"/>
    <xs:element name="UnfoldedMRZ" type="wf:type.feedback.mrz.unfolded"/>
  </xs:sequence>
</xs:complexType>
```

7.32. type.feedback.seal.residencepermitsupplementarysheet"

Contains the data of a residence permit supplementary sheet.

7.32.1. Attribute

None.

7.32.2. Elements

Element name	Description
NumberOfSupplementarySheet	wf:type.feedback.seal.residencepermitsupplementarysheet.n- umberofsupplementarysheet Number of the supplementary sheet.
UnfoldedMRZ	wf:type.feedback.mrz.unfolded MRZ contained in the document.

Table 7.30.

7.32.3. XSD Definition

```
<xs:complexType name="type.feedback.seal.residencepermitsupplementarysheet">
  <xs:sequence>
    <xs:element name="NumberOfSupplementarySheet"
      type="wf:type.feedback.seal.residencepermitsupplementarysheet.numberofsupplementarysheet"/>
    <xs:element name="UnfoldedMRZ" type="wf:type.feedback.mrz.unfolded"/>
  </xs:sequence>
</xs:complexType>
```

7.33. type.feedback.seal.addressstickergermanidentitycard"

Contains the content of an address sticker of a german identity card.

7.33.1. Attribute

None.

7.33.2. Elements

Element name	Description
DocumentNumber	xs:string Number of the document.
OfficialMunicipalityCodeNumber	xs:string Official municipality code number.
ResidentialAddress	xs:string Residential address.

Table 7.31.

7.33.3. XSD Definition

```
<xs:complexType name="type.feedback.seal.addressstickergermanidentitycard">
  <xs:sequence>
    <xs:element name="DocumentNumber" type="xs:string" />
    <xs:element name="OfficialMunicipalityCodeNumber" type="xs:string" />
    <xs:element name="ResidentialAddress" type="xs:string" />
  </xs:sequence>
</xs:complexType>
```

7.34. type.feedback.seal.unknown

Contains the content of an unknown seal type.

7.34.1. Attribute

None.

7.34.2. Elements

Element name	Description
BinaryContent	xs:base64Binary Digit seal content in an unsupported format.

Table 7.32.

7.34.3. XSD Definition

```
<xs:complexType name="type.feedback.seal.unknown">
  <xs:sequence>
    <xs:element name="BinaryContent" type="xs:base64Binary" />
  </xs:sequence>
</xs:complexType>
```

7.35. type.feedback.mrz.unfolded

Contains an unfolded MRZ.

7.35.1. Attributes

None.

7.35.2. Elements

Element name	Description
DocumentType	xs:string The type of the document.
Issuer	xs:string The issuer of the document.
GivenName	xs:string The given name of the document holder.
Surname	xs:string The surname of the document holder.
DocumentNumber	xs:string The number of the document.
Nationality	xs:string The nationality of the document holder.
DateOfBirth	xs:string The date of birth of the document holder.
Sex	xs:string The sex of the document holder.
ExpiryDate	xs:string The expiry date of the document.
OptionalData	xs:string Optional data in the document.
ChkDgtDocumentNumber	xs:string The check digit of the document number.
ChkDgtDateOfBirth	xs:string The check digit of the date of birth number.
ChkDgtExpiryDate	xs:string The check digit of the expiry date.
ChkDgtOptionalData	xs:string The check digit of the optional data.
ChkDgtComposite	xs:string The composite check digit.
IsoDateOfBirth	wf:type.feedback.string.date The date of birth in ISO format.
IsoDateOfExpiry	wf:type.feedback.string.date The date of expiry in ISO format.

Table 7.33.

7.35.3. XSD Definition

```
<xs:complexType name="type.feedback.mrz.unfolded">
```

```

<xs:sequence>
  <xs:element name="DocumentType" type="xs:string" />
  <xs:element name="Issuer" type="xs:string" />
  <xs:element name="GivenName" type="xs:string" />
  <xs:element name="Surname" type="xs:string" />
  <xs:element name="DocumentNumber" type="xs:string" />
  <xs:element name="Nationality" type="xs:string" />
  <xs:element name="DateOfBirth" type="xs:string" />
  <xs:element name="Sex" type="xs:string" />
  <xs:element name="ExpiryDate" type="xs:string" />
  <xs:element name="OptionalData" type="xs:string" />
  <xs:element name="ChkDgtDocumentNumber" type="xs:string" />
  <xs:element name="ChkDgtDateOfBirth" type="xs:string" />
  <xs:element name="ChkDgtExpiryDate" type="xs:string" />
  <xs:element name="ChkDgtOptionalData" type="xs:string" />
  <xs:element name="ChkDgtComposite" type="xs:string" />
  <xs:element name="IsoDateOfBirth" type="wf:type.feedback.string.date" minOccurs="0" />
  <xs:element name="IsoDateOfExpiry" type="wf:type.feedback.string.date" minOccurs="0" />
</xs:sequence>
</xs:complexType>

```

7.36. type.feedback.mrz.unfolded.shortened

Contains an shortened unfolded MRZ, i.e. without optional data and optional data check digit.

7.36.1. Attributes

None.

7.36.2. Elements

Element name	Description
DocumentType	xs:string The type of the document.
Issuer	xs:string The issuer of the document.
GivenName	xs:string The given name of the document holder.
Surname	xs:string The surname of the document holder.
DocumentNumber	xs:string The number of the document.
Nationality	xs:string The nationality of the document holder.
DateOfBirth	xs:string The date of birth of the document holder.
Sex	xs:string The sex of the document holder.
ExpiryDate	xs:string The expiry date of the document.

Element name	Description
ChkDgtDocumentNumber	xs:string The check digit of the document number.
ChkDgtDateOfBirth	xs:string The check digit of the date of birth number.
ChkDgtExpiryDate	xs:string The check digit of the expiry date.
ChkDgtComposite	xs:string The composite check digit.
IsoDateOfBirth	wf:type.feedback.string.date The date of birth in ISO format.
IsoDateOfExpiry	wf:type.feedback.string.date The date of expiry in ISO format.

Table 7.34 .

7.36.3. XSD Definition

```
<xs:complexType name="type.feedback.mrz.unfolded.shortened">
  <xs:sequence>
    <xs:element name="DocumentType" type="xs:string" />
    <xs:element name="Issuer" type="xs:string" />
    <xs:element name="GivenName" type="xs:string" />
    <xs:element name="Surname" type="xs:string" />
    <xs:element name="DocumentNumber" type="xs:string" />
    <xs:element name="Nationality" type="xs:string" />
    <xs:element name="DateOfBirth" type="xs:string" />
    <xs:element name="Sex" type="xs:string" />
    <xs:element name="ExpiryDate" type="xs:string" />
    <xs:element name="ChkDgtDocumentNumber" type="xs:string" />
    <xs:element name="ChkDgtDateOfBirth" type="xs:string" />
    <xs:element name="ChkDgtExpiryDate" type="xs:string" />
    <xs:element name="ChkDgtComposite" type="xs:string" />
    <xs:element name="IsoDateOfBirth" type="wf:type.feedback.string.date" minOccurs="0" />
    <xs:element name="IsoDateOfExpiry" type="wf:type.feedback.string.date" minOccurs="0" />
  </xs:sequence>
</xs:complexType>
```

7.37. type.feedback.string.date

Represents a date string with full year information. Missing parts shall be encoded with "00", e.g. "1990-10-00" or "2011-00-00".

7.37.1. Values

The string SHALL conform to the pattern `\d{4}-\d{2}-\d{2}`.

7.37.2. XSD Definition

```
<xs:simpleType name="type.feedback.string.date">
  <xs:restriction base="xs:string">
    <xs:pattern value="\d{4}-\d{2}-\d{2}" />
  </xs:restriction>
</xs:simpleType>
```

7.38. type.feedback.extended

Allows the server to return implementation-specific feedback. MUST only be used if the workflow definition contains corresponding requests for custom feedback as part of an implementation-specific workflow extension configuration.

7.38.1. Attributes

None.

7.38.2. Elements

Implementation-specific feedback MAY contain one element of any type from a different namespace than <http://trdoccheck.bsi.bund.de/hldc/workflow/1> [<http://trdoccheck.bsi.bund.de/hldc/workflow/1>].

7.38.3. XSD Definition

```
<xs:complexType name="type.feedback.extended">
  <xs:sequence>
    <xs:any namespace="##other" minOccurs="0"
      processContents="lax" />
  </xs:sequence>
</xs:complexType>
```

7.39. Workflow extensions

The workflow and feedback specification of the high-level document check allow for implementation-specific extensions. This section specifies the constraints for such extensions.

7.39.1. Workflow definition

1. All server implementations MUST correctly validate all workflow definitions that conform to this document.
2. All implementation-specific extensions MUST be placed below the `hldc#wf:Extension` node. To prevent conflicts between multiple extension implementations, only one extension is allowed per workflow.
3. A server MUST validate known extensions. Any errors MAY be reported with a regular validation error message as part of the `WorkflowParserError`.
4. A server MUST reject unknown extensions to prevent incomplete or incorrect interpretation of the workflow definition. The `WorkflowParserError` MUST explicitly state that the extension was rejected.
5. Extension elements MAY refer to IDs in the regular workflow definition and vice versa. This allows extensions that are transparent to the client (e.g. by adding a new type of condition).

7.39.2. Feedback

1. If the workflow extension does not define custom feedback elements, the workflow and its feedback MUST be processable by all clients that conform to this document without modification of the client.
2. All XML-based feedback MUST be validatable by all conformant clients.
3. All feedback requests that conform to this Technical Guideline MUST be answered by corresponding conformant feedback. Custom feedback MAY only be used for implementation-specific feedback requests.
4. Extensions MAY provide feedback as

- modifications of regular feedback
- text-based feedback in the `stringFeedback` field of `WorkflowFeedback`
- binary feedback in the `binaryFeedback` field of `WorkflowFeedback`
- Custom XML-based feedback using the `wf:ExtensionFeedback` node

8. Transaction management

The Transaction Management API provides functions for transaction-based logging of document checks in compliance to [BSI TR-03135-1].

The definitions of the Transaction Management API are provided in `t1_v2.wsdl`.

8.1. Namespace

All elements that are defined in this chapter are member of the namespace <http://trdoccheck.bsi.bund.de/t1/wsdl/2> [http://trdoccheck.bsi.bund.de/t1/wsdl/2], which is aliased by `t1`.

8.2. Data types

In addition to simple XSD types, the SOAP interface uses custom data types, which are described in the following.

8.2.1. ExternalKey

Represents a name-value combination which will be included in the [BSI TR-03135] XML data.

8.2.1.1. Attributes

None.

8.2.1.2. Elements

Element name	Description
name	xs:string Name of the external key.
value	xs:string Value of the external key.

Table 8.1.

8.2.1.3. WSDL Definition

```
<complexType name="ExternalKey">
  <sequence>
    <element name="name" type="xs:string" />
    <element name="value" type="xs:string" />
  </sequence>
</complexType>
```

8.2.2. LoggingProvider

Represents a [BSI TR-03135]-compliant logging provider which saves [BSI TR-03135] XML data persistently.

8.2.2.1. Attributes

None.

8.2.2.2. Elements

Element name	Description
name	xs:string Name of the logging provider.
type	xs:string The type of the logging provider (can be empty).

Table 8.2.

8.2.2.3. WSDL Definition

```
<complexType name="LoggingProvider">
  <sequence>
    <element name="name" type="xs:string"/>
    <element name="type" type="xs:string" />
  </sequence>
</complexType>
```

8.2.3. LogType

Characterizes a subcategory of a [BSI TR-03135] log entry. Derived from xs:string.

8.2.3.1. Values

Value	Description
doc-check	Document check with [BSI TR-03135]-compliant XML data.
bio-check	Biometric check with [BSI TR-03135]-compliant XML data.
background-check	Background system check with arbitrary XML data.
app-specific-check	Application specific check with arbitrary XML data.

Table 8.3.

8.2.3.2. WSDL Definition

```
<simpleType name="LogType">
  <restriction base="xs:string">
    <enumeration value="doc-check" />
    <enumeration value="bio-check" />
    <enumeration value="background-check" />
    <enumeration value="app-specific-check"/>
  </restriction>
</simpleType>
```

8.2.4. UUID

The definition of t1:UUID is identical to h1dc:UUID except for the namespace. Please refer to ▶ Section 6.2.2 for the definition.

8.3. Fault types

This section specifies the SOAP faults that are specific to this SOAP API. No fault has any attributes.

8.3.1.

Returned by methods that prevent further modification of a transaction (read-only) if the transaction is currently written to.

8.3.1.1. WSDL Definition

```
<complexType name="InProgress">
  <sequence>
  </sequence>
</complexType>
```

8.3.2. InvalidLoggingProvider

Returned if an invalid logging provider was requested or if no default logging provider is available.

8.3.2.1. WSDL Definition

```
<complexType name="InvalidLoggingProvider">
  <sequence>
  </sequence>
</complexType>
```

8.3.3. InvalidLoggingParameter

Returned if the logging provider cannot interpret the provider-specific parameter.

8.3.3.1. WSDL Definition

```
<complexType name="InvalidLoggingParameter">
  <sequence>
  </sequence>
</complexType>
```

8.3.4. InvalidTransactionId

Returned if a transaction ID does not exist on the server. The ID is either invalid or has expired due to a call to endTransaction or limited resources on the server.

8.3.4.1. Elements

Element name	Description
id?	t1:UUID The rejected ID. Only present in case of ambiguity.

Table 8.4.

8.3.4.2. WSDL Definition

```
<complexType name="InvalidTransactionId">
  <sequence>
    <element name="id" type="t1:UUID" minOccurs="0" />
  </sequence>
</complexType>
```

8.3.5. LoggingFailed

Returned if the server could not complete the logging procedure.

8.3.5.1. WSDL Definition

```
<complexType name="InvalidTransactionId">
  <sequence>
    <element name="id" type="t1:UUID" minOccurs="0" />
  </sequence>
</complexType>
```

8.3.6. LoggingProfileNotFound

Returned if the requested logging profile does not exist on the server.

8.3.6.1. WSDL Definition

```
<complexType name="LoggingProfileNotFound">
  <sequence>
  </sequence>
</complexType>
```

8.3.7. LogParserError

Returned if the server could not parse submitted log XML or logging profile XSLT.

8.3.7.1. WSDL Definition

```
<complexType name="LogParserError">
  <sequence>
  </sequence>
</complexType>
```

8.3.8. ReadOnly

Returned if the transaction is read-only and must not be modified.

8.3.8.1. WSDL Definition

```
<complexType name="ReadOnly">
  <sequence>
  </sequence>
</complexType>
```

8.4. Operations

8.4.1. addLogData

Allows the client application to add custom log data to a transaction.

8.4.1.1. Request elements

Element name	Description
transactionID	t1:UUID The transaction ID to which the data should be copied.

Element name	Description
logType	t1:LogType Specifies the type of the log data.
content	xs:string The xml-formatted log data.

Table 8.5.

8.4.1.2. Response elements

None.

8.4.1.3. Faults

Fault type	Cause
t1:InvalidTransactionId	Value of transactionID is invalid or has expired.
t1:LogParserError	Value of content could not be parsed or validated.
t1:ReadOnly	The transaction is write-protected and must not be modified.

Table 8.6.

8.4.1.4. WSDL Definition

```

<!-- operation request element -->
<element name="addLogData">
  <complexType>
    <sequence>
      <element name="transactionID" type="t1:UUID" />
      <element name="logType" type="t1:LogType" />
      <element name="content" type="xs:string" />
    </sequence>
  </complexType>
</element>
<!-- operation response element -->
<element name="addLogDataResponse">
  <complexType>
    <sequence>
    </sequence>
  </complexType>
</element>

```

8.4.2. addLoggingProfile

Transfers a new logging profile definition to the server. The profile must be a valid XSL transformation that operates on a transaction log according to Part 1 of this Technical Guideline. If an identically named workflow exists on the server, it MUST be replaced with the newly submitted definitions.

8.4.2.1. Request elements

Element name	Description
name	xs:string Reference to the profile for use with applicable SOAP calls.
profile	xs:base64Binary The base64-encoded XSLT document.

Table 8.7.

8.4.2.2. Response elements

None.

8.4.2.3. Faults

Fault type	Cause
tl:LogParserError	An error occurred while validating the submitted logging profile.

Table 8.8.

8.4.2.4. WSDL Definition

```

<!-- operation request element -->
<element name="addLoggingProfile">
  <complexType>
    <sequence>
      <element name="name" type="xs:string" />
      <element name="profile" type="xs:base64Binary" />
    </sequence>
  </complexType>
</element>
<!-- operation response element -->
<element name="addLoggingProfileResponse">
  <complexType>
    <sequence>
    </sequence>
  </complexType>
</element>

```

8.4.3. beginTransaction

Opens a [BSI TR-03135] transaction and returns a new transaction ID.

8.4.3.1. Request elements

Element name	Description
ctNamespace	xs:string The "Check Transaction" namespace for the logging of the [BSI TR-03135] data. If empty, http://trdoccheck.bsi.bund.de/ct/4 [http://trdoccheck.bsi.bund.de/ct/3] is assumed.
schemaVersion	xs:string The [BSI TR-03135] schema version number. If empty, version 1 is assumed.
location	xs:string The location of the inspection system. Copied into the [BSI TR-03135] XML data.
operationalEnvironment	xs:string The operational environment which is copied into the TR#03135 XML data. Examples: entry, exit, domestic, training, mobile, undefined.
externalKeys*	xs:string External keys to be copied into the [BSI TR-03135] XML data.

Table 8.9.

8.4.3.2. Response elements

Element name	Description
transactionID	t1:UUID Automatically generated unique ID for the new transaction. This ID will be used as a reference to this transaction.

Table 8.10.

8.4.3.3. Faults

None.

8.4.3.4. WSDL Definition

```
<!-- operation request element -->
<element name="beginTransaction">
  <complexType>
    <sequence>
      <element name="ctNamespace" type="xs:string" />
      <element name="schemaVersion" type="xs:string" />
      <element name="location" type="xs:string" />
      <element name="operationalEnvironment" type="xs:string" />
      <element name="externalKeys" type="t1:ExternalKey"
        minOccurs="0" maxOccurs="unbounded"/>
    </sequence>
  </complexType>
</element>
<!-- operation response element -->
<element name="beginTransactionResponse">
  <complexType>
    <sequence>
      <element name="transactionID" type="t1:UUID" />
    </sequence>
  </complexType>
</element>
```

8.4.4. endTransaction

Closes a transaction. Invalidates the corresponding transaction ID.

8.4.4.1. Request elements

Element name	Description
transactionID	t1:UUID ID of the transaction to end.

Table 8.11.

8.4.4.2. Response elements

None.

8.4.4.3. Faults

Fault type	Cause
t1:InvalidTransactionId	Value of transactionID is invalid or has expired.

Table 8.12.

8.4.4.4. WSDL Definition

```

<!-- operation request element -->
<element name="endTransaction">
  <complexType>
    <sequence>
      <element name="transactionID" type="t1:UUID" />
    </sequence>
  </complexType>
</element>
<!-- operation response element -->
<element name="endTransactionResponse">
  <complexType>
    <sequence>
      </sequence>
  </complexType>
</element>

```

8.4.5. getAllLoggingProviders

Returns a list of all available logging providers. This function is OPTIONAL.

8.4.5.1. Request elements

None.

8.4.5.2. Response elements

Element name	Description
loggingProvider*	t1:LoggingProvider loggingProvider* Available logging providers.

Table 8.13 .

8.4.5.3. Faults

None.

8.4.5.4. WSDL Definition

```

<!-- operation request element -->
<element name="getAllLoggingProviders">
  <complexType>
    <sequence>
      </sequence>
  </complexType>
</element>
<!-- operation response element -->
<element name="getAllLoggingProvidersResponse">
  <complexType>
    <sequence>
      <element name="loggingProvider" type="t1:LoggingProvider"
        minOccurs="0" maxOccurs="unbounded" />
    </sequence>
  </complexType>
</element>

```

8.4.6. getTransactionXML

Returns the [BSI TR-03135]-compliant XML data of the corresponding transaction. If called, MUST be called between beginTransaction and endTransaction.

If the transaction is currently being modified, e.g., by the document check process, the server MAY fail the call with `InProgress` fault.

On success, the transaction MUST be flagged as read-only to prevent further modification, if the `keepWritable` is not present or has the value `false`, otherwise – if the `keepWritable` attribute has the value `true`, the transaction MUST be kept open for further writes.

8.4.6.1. Request elements

Element name	Description
<code>transactionID</code>	<code>keepWritable</code> A valid transaction ID.
<code>errorCode</code>	<code>xs:int</code> Application-defined error code which is copied to the [BSI TR-03135]-XML. If there was no error, the <code>errorCode</code> MUST be set to 0.
<code>loggingProfile</code>	<code>xs:string</code> Name of the logging profile.
<code>keepWritable</code>	<code>xs:boolean</code> Whether the transaction XML is kept open for further writes.

Table 8.14.

8.4.6.2. Response elements

Element name	Description
<code>xml</code>	<code>xs:string</code> The [BSI TR-03135]-compliant XML data of the specified transaction.

Table 8.15.

8.4.6.3. Faults

Fault type	Cause
<code>t1:InProgress</code>	The transaction is currently being written to and cannot be write-protected.
<code>t1:InvalidTransactionId</code>	Value of <code>transactionID</code> is invalid or has expired.
<code>t1:LoggingProfileNotFound</code>	The requested logging profile <code>loggingProfile</code> does not exist on the server.

Table 8.16.

8.4.6.4. WSDL Definition

```

<!-- operation request element -->
<element name="getTransactionXML">
  <complexType>
    <sequence>
      <element name="transactionID" type="t1:UUID" />
      <element name="errorCode" type="xs:int" />
      <element name="loggingProfile" type="xs:string" />
      <element name="keepWritable" type="xs:boolean" minOccurs="0" />
    </sequence>
  </complexType>
</element>
<!-- operation response element -->
<element name="getTransactionXMLResponse">

```

```

<complexType>
  <sequence>
    <element name="xml" type="xs:string" />
  </sequence>
</complexType>
</element>

```

8.4.7. mergeTransaction

Merges contents of the source transaction into the target transaction and ends the source transaction afterwards.

8.4.7.1. Request elements

Element name	Description
targetID	t1:UUID Transaction ID of the target transaction.
sourceID	t1:UUID Transaction ID of the source transaction.

Table 8.17.

8.4.7.2. Response elements

None.

8.4.7.3. Faults

Fault type	Cause
t1:InProgress	The transaction sourceID is currently being written to and cannot be write-protected.
t1:InvalidTransactionId	Either the value of targetID or sourceID is invalid or has expired
t1:ReadOnly	The transaction targetID is write-protected and must not be modified.

Table 8.18.

8.4.7.4. WSDL Definition

```

<!-- operation request element -->
<element name="mergeTransaction">
  <complexType>
    <sequence>
      <element name="targetID" type="t1:UUID" />
      <element name="sourceID" type="t1:UUID" />
    </sequence>
  </complexType>
</element>
<!-- operation response element -->
<element name="mergeTransactionResponse">
  <complexType>
    <sequence>
      </sequence>
  </complexType>
</element>

```

8.4.8. removeLoggingProfile

Removes a logging profile which was previously loaded with addLoggingProfile

8.4.8.1. Request elements

Element name	Description
profileName	tl:string The name of the logging profile to remove.

Table 8.19.

8.4.8.2. Response elements

None.

8.4.8.3. Faults

Fault type	Cause
tl:LoggingProfileNotFound	The logging profile profileName does not exist on the server

Table 8.20.

8.4.8.4. WSDL Definition

```

<!-- operation request element -->
<element name="removeLoggingProfile">
  <complexType>
    <sequence>
      <element name="profileName" type="xs:string" />
    </sequence>
  </complexType>
</element>
<!-- operation response element -->
<element name="removeLoggingProfileResponse">
  <complexType>
    <sequence>
      </sequence>
  </complexType>
</element>

```

8.4.9. saveTransaction

Saves the current transaction state as [BSI TR-03135]-compliant XML data the via a logging provider. If called, MUST be called between beginTransaction and endTransaction.

In order to save log data from an HLDC workflow, it is RECOMMENDED to call saveTransaction only after workflow execution has stopped to ensure that the log data is complete with respect to the workflow.

Workflow execution has stopped if either of the following is true:

- getWorkflowFeedback OR getWorkflowFeedbackById return workflowStatus finished or cancelled
- cancelWorkflow was called
- endWorkflow was called.

Otherwise, the server MAY fail the call with InProgress fault.

On success, the transaction MUST be flagged as read-only to prevent further modification.

The server MAY log the data asynchronously and return the call of saveTransaction before the actual logging has finished.

8.4.9.1. Request elements

Element name	Description
transactionID	tl:UUID A valid transaction ID.
provider?	tl:string The name of the logging provider which is used for the save operation. If empty, the server MAY use a default logging provider. The names of the logging providers are server-defined. They can be queried if the server provides the optional function getAllLoggingProviders.
providerParam?	xs:string Provider-specific parameter. MAY be empty. The server MAY return an error if the value of providerParam is invalid for provider. The server MUST accept empty providerParam for the default logging provider. The server MAY ignore providerParam if provider is empty.
errorCode	xs:int Application-defined error code which is copied to the [BSI TR-03135]-XML. If there was no error, the errorCode MUST be set to 0.
loggingProfile	xs:string Name of the logging profile to use.

Table 8.21.

8.4.9.2. Response elements

None.

8.4.9.3. Faults

Fault type	Cause
tl:InProgress	The transaction is currently being written to and cannot be write-protected.
tl:InvalidLoggingParameter	Value of providerParam is invalid for the selected provider.
tl:InvalidLoggingProvider	Value of provider is invalid.
tl:InvalidTransactionId	Value of transactionID is invalid or has expired.
tl:LoggingFailed	The server was unable to store the data. This fault MAY be omitted if the server processes the logging call asynchronously.
tl:LoggingProfileNotFound	The requested logging profile loggingProfile does not exist on the server.

Table 8.22.

8.4.9.4. WSDL Definition

```
<!-- operation request element -->
<element name="saveTransaction">
  <complexType>
    <sequence>
      <element name="transactionID" type="tl:UUID" />
      <element name="provider" type="xs:string" minOccurs="0" />
      <element name="providerParam" type="xs:string" minOccurs="0" />
      <element name="errorCode" type="xs:int" />
      <element name="loggingProfile" type="xs:string" />
    </sequence>
  </complexType>
```

```

</element>
<!-- operation response element -->
<element name="saveTransactionResponse">
  <complexType>
    <sequence>
    </sequence>
  </complexType>
</element>

```

8.4.10. saveTransactionXML

Saves a complete transaction XML document via a logging provider.

The server MAY log the data asynchronously and return the call of `saveTransactionXML` before the actual logging has finished.

8.4.10.1. Request elements

Element name	Description
transactionXML	xs:string A valid XML-formatted log file according to [BSI TR-03135-1].
containsExtendedData?	tl:boolean Signifies if the XML document contains extended data according to version 1.x of [BSI TR-03135], if the XML complies to version 1.x of [BSI TR-03135].
provider?	xs:string The name of the logging provider which is used for the save operation. If empty, the server MAY use a default logging provider. The names of the logging providers are server-defined. They can be queried if the server provides the optional function <code>getAllLoggingProviders</code> .
providerParam?	xs:string Provider-specific parameter. MAY be empty. The server MAY return an error if the value of <code>providerParam</code> is invalid for <code>provider</code> . The server MUST accept empty <code>providerParam</code> for the default logging provider. The server MAY ignore <code>providerParam</code> if <code>provider</code> is empty.

Table 8.23 .

8.4.10.2. Response elements

None.

8.4.10.3. Faults

Fault type	Cause
tl:InvalidLoggingParameter	Value of <code>providerParam</code> is invalid for the selected provider.
tl:InvalidLoggingProvider	Value of <code>provider</code> is invalid.
tl:LoggingFailed	The server was unable to store the data. This fault MAY be omitted if the server processes the logging call asynchronously.

Table 8.24 .

8.4.10.4. WSDL Definition

```

<!-- operation request element -->
<element name="saveTransactionXML">
  <complexType>

```

```

<sequence>
  <element name="transactionID" type="t1:UUID" />
  <element name="containsExtendedData" type="xs:boolean" minOccurs="0" />
  <element name="provider" type="xs:string" minOccurs="0" />
  <element name="providerParam" type="xs:string" minOccurs="0" />
</sequence>
</complexType>
</element>
<!-- operation response element -->
<element name="saveTransactionXMLResponse">
  <complexType>
    <sequence>
    </sequence>
  </complexType>
</element>

```

8.4.11. setSystemInformation

Saves a complete transaction XML document via a logging provider.

8.4.11.1. Request elements

Element name	Description
transactionID	t1:UUID A valid transaction ID.
vendor	t1:boolean The vendor name to be set.
name	xs:string The system name to be set.
version	xs:string The version to be set.

Table 8.25.

8.4.11.2. Response elements

None.

8.4.11.3. Faults

Fault type	Cause
t1:InvalidTransactionId	Value of transactionID is invalid or has expired.
t1:ReadOnly	The transaction is write-protected and must not be modified.

Table 8.26.

8.4.11.4. WSDL Definition

```

<!-- operation request element -->
<element name="setSystemInformation">
  <complexType>
    <sequence>
      <element name="transactionID" type="t1:UUID" />
      <element name="vendor" type="xs:string" />
      <element name="name" type="xs:string" />
      <element name="version" type="xs:string" />
    </sequence>
  </complexType>
</element>

```

```
<!-- operation response element -->  
<element name="setSystemInformationResponse">  
  <complexType>  
    <sequence>  
    </sequence>  
  </complexType>  
</element>
```

List of Abbreviations

Abbreviation	Description
API	Application Programming Interface
BAC	Basic Access Control
CA	Chip Authentication
CAN	Card Access Number
eID	Electronic Identity Document
HLDC	High Level Document Check
ICAO	International Civil Aviation Organization
MRTD	Machine Readable Travel Document
MRZ	Machine Readable Zone
PACE	Password Authenticated Connection Establishment
PNG	Portable Network Graphics
RFID	radio-frequency identification
SOAP	Simple Object Access Protocol
TA	Terminal Authentication
WSDL	Web Services Description Language
XML	Extensible Markup Language
XSD	XML Schema Definition
XSLT	Extensible Stylesheet Language Transformation

Bibliography

- [BSI TR-03135] *BSI TR-03135, Technical Guideline Machine Authentication of MRTDs for Public Sector Applications, Version 2.5.*
- [BSI TR-03135-1] *BSI TR-03135-1, Technical Guideline Machine Authentication of MRTDs for Public Sector Applications. Part 1: Overview and Functional Requirements, Version 2.5.*
- [KeepAChangelog] *Keep a Changelog – <https://keepachangelog.com/en/1.0.0/>.*
- [RFC2119] *Request For Comments Editor (RFC), Bradner, Scott: Key words for use in RFCs to indicate requirement levels, RFC 2119, 1997.*