



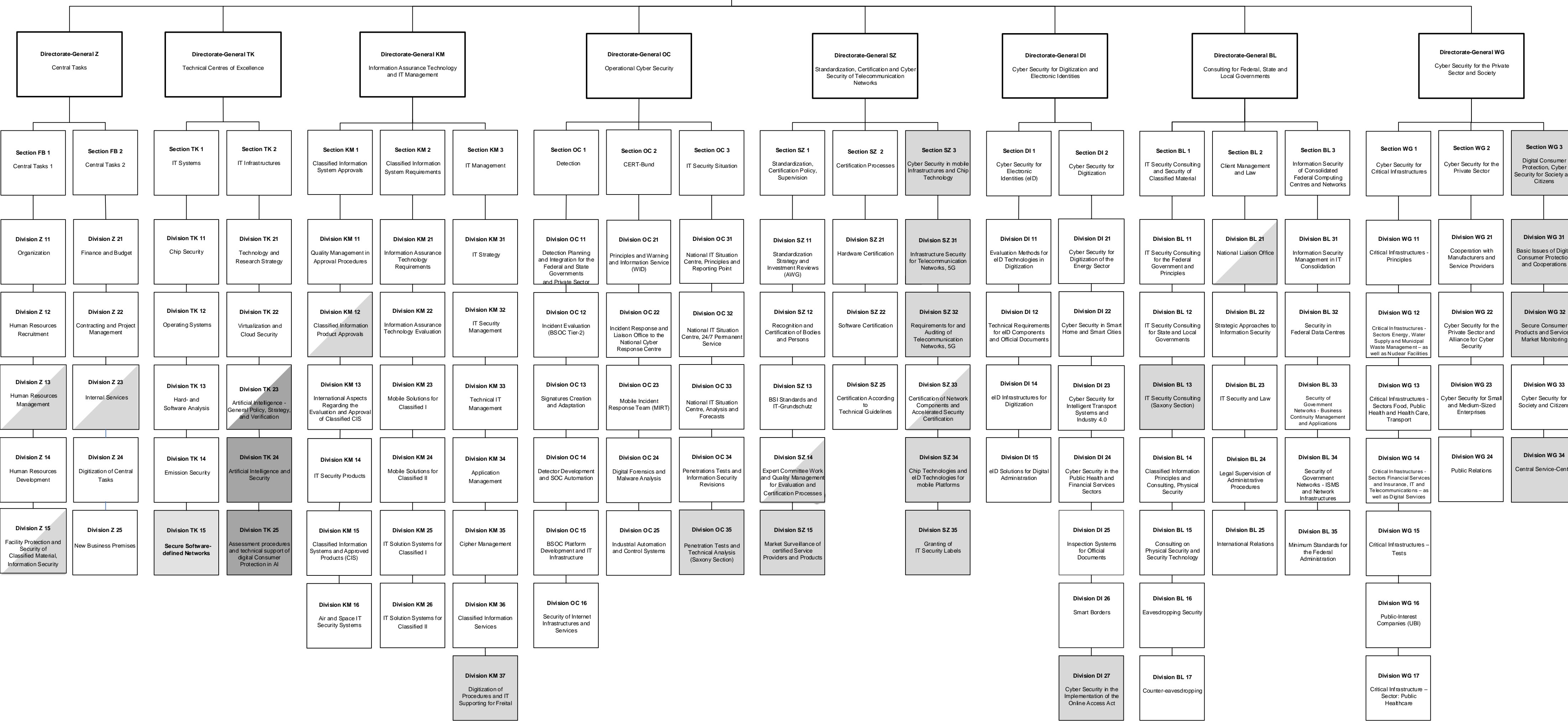
Office Bonn
Godesberger Allee 185-189
53175 Bonn
GERMANY
Tel.: +49 228 99 9582-0
Fax: +49 228 99 9582-5400

Office Freital
Hüttenstraße 14
01705 Freital
GERMANY
Tel.: +49 228 99 9582-0
Fax: +49 228 99 9582-5400

Office Saarbrücken
Scheer Tower, Uni-Campus Nord
66123 Saarbrücken
GERMANY
Tel.: +49 228 99 9582-0
Fax: +49 228 99 9582-5400

Postal Address:
Postfach 20 03 63
53133 Bonn
GERMANY

E-Mail: poststelle@bsi.bund.de
De-Mail: poststelle@bsi-bund.de-mail.de
Web: http://www.bsi.bund.de



- Organizational Unit in Bonn
- Organizational Unit in Freital
- Organizational Unit in Bonn and Freital
- Organizational Unit in Saarbrücken
- Organizational Unit in Bonn and Saarbrücken